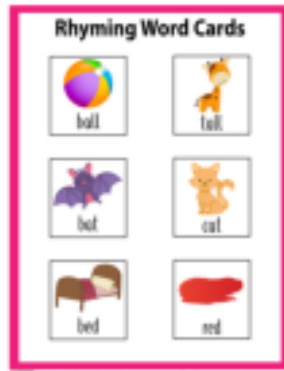


# Rhyming Words

## Table Of Contents

Page



Rhyming Word Cards (10 pages)

2



Match the Rhyming Words (10 pages)

12



Circle the Rhyming Word (10 pages)

22

# Rhyming Word Cards



ball



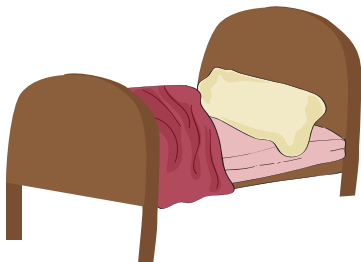
tall



bat



cat

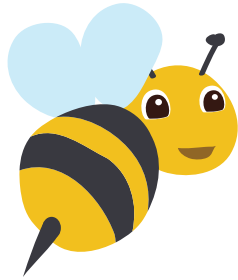


bed

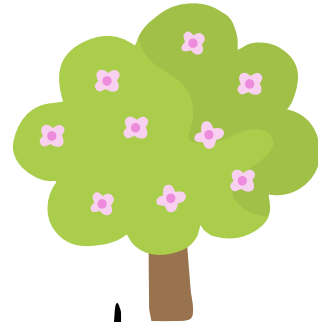


red

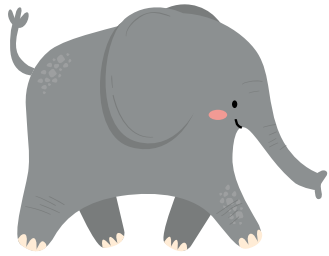
# Rhyming Word Cards



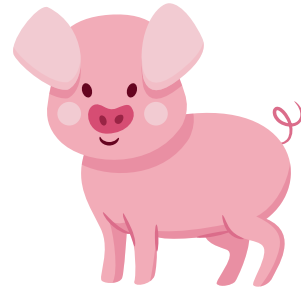
bee



tree



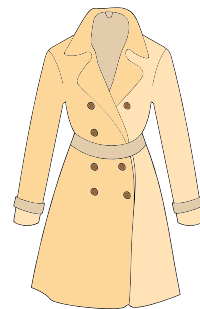
big



pig



boat

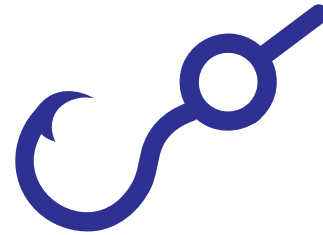


coat

# Rhyming Word Cards



book



hook



box



fox

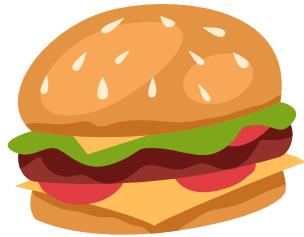


bug

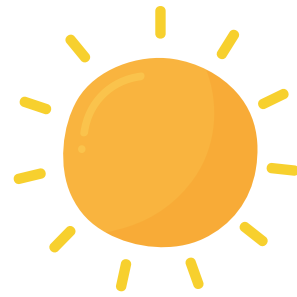


mug

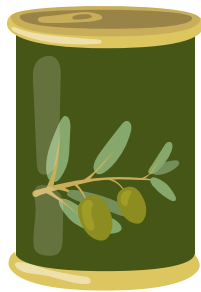
# Rhyming Word Cards



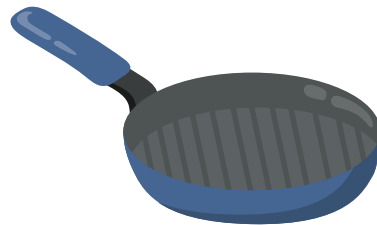
bun



sun



can



pan



car



jar

# Rhyming Word Cards



cat



hat



cub



tub

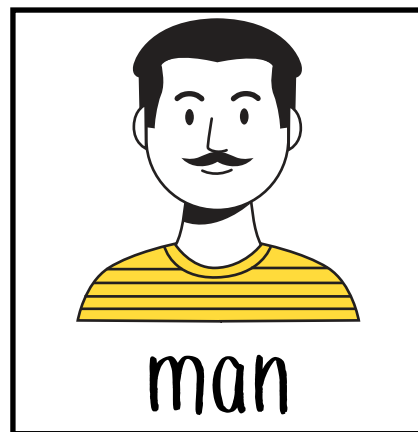
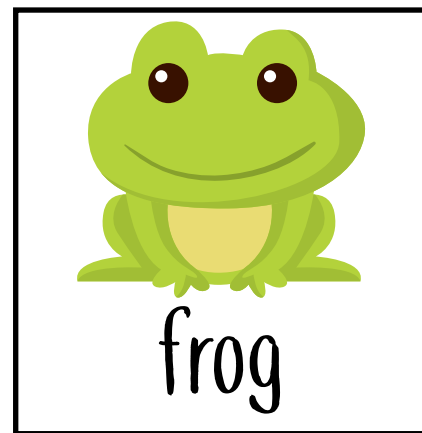
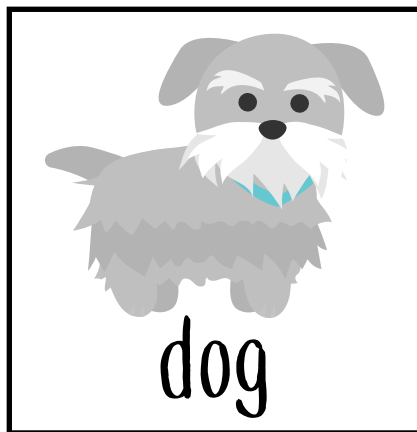
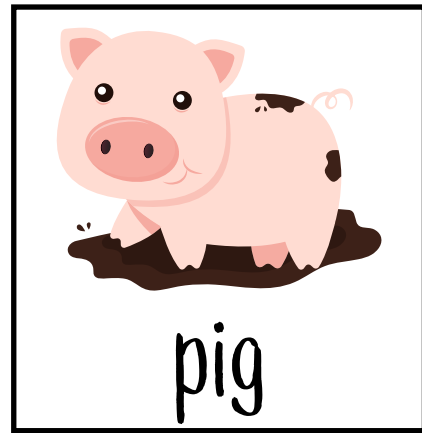


cut

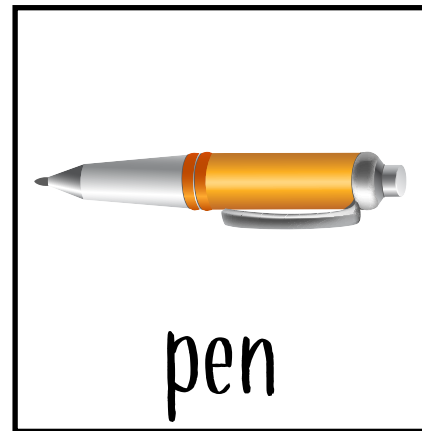
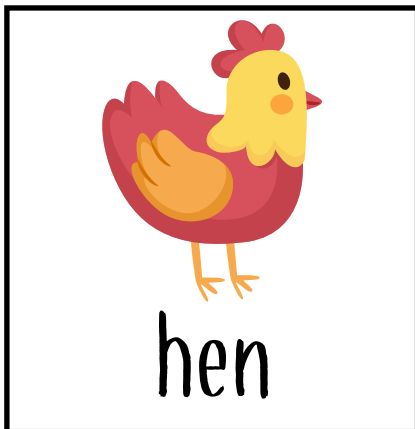
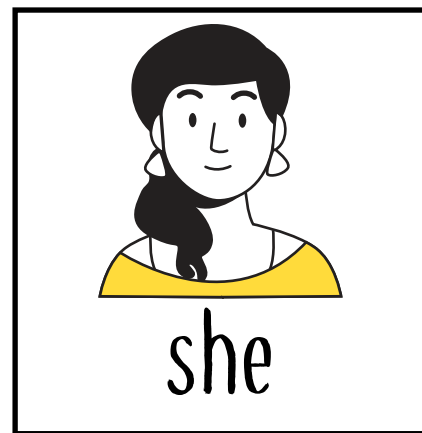
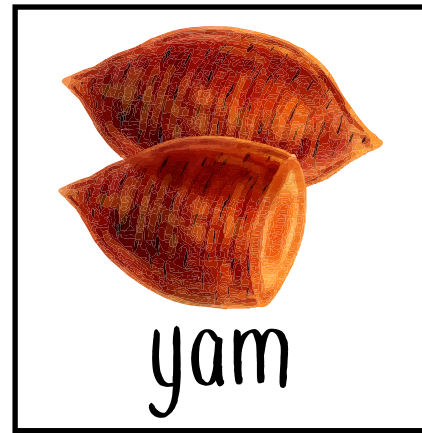
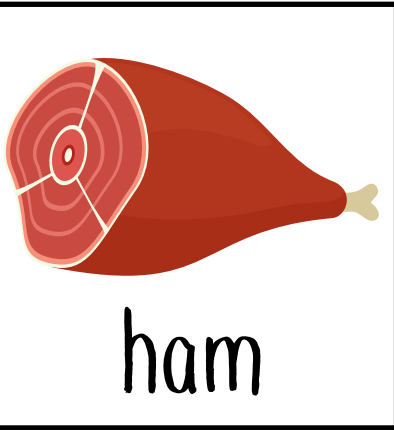


nut

# Rhyming Word Cards

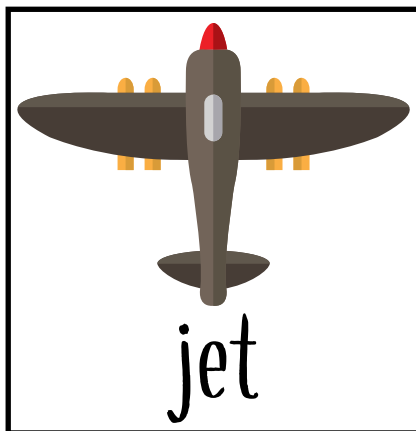
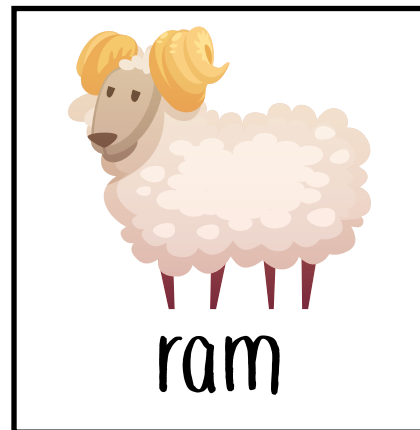
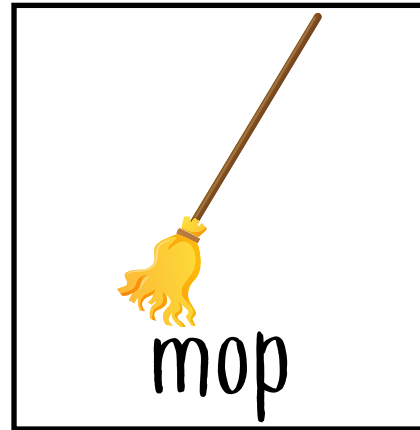
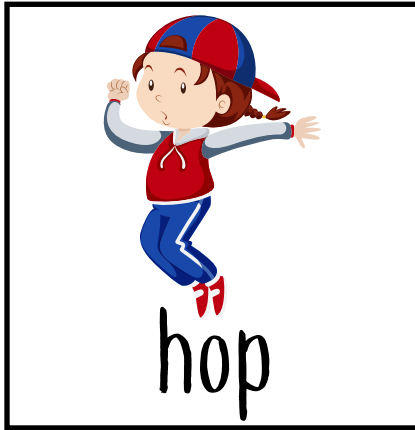


# Rhyming Word Cards





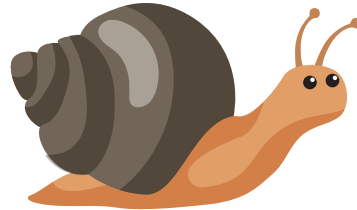
# Rhyming Word Cards



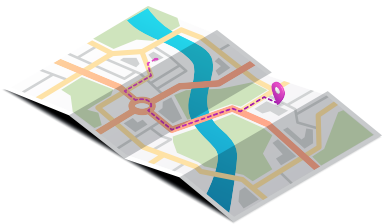
# Rhyming Word Cards



mail



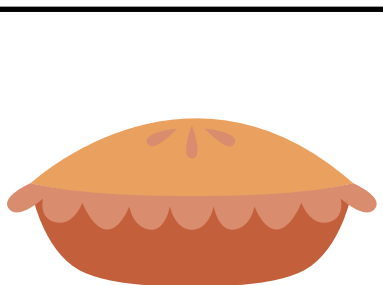
snail



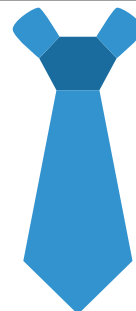
map



nap



pie



tie

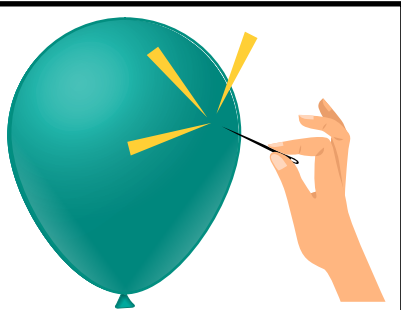
# Rhyming Word Cards



pin



win



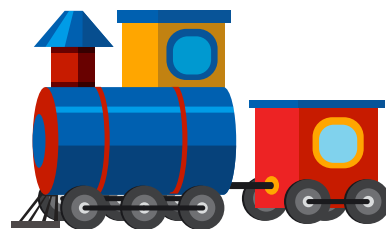
pop



stop



rain



train

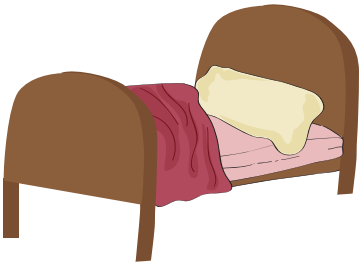
# Match the Rhyming Words



ball



red



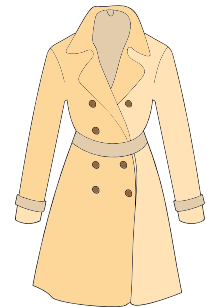
bed



tall



bat



coat



boat

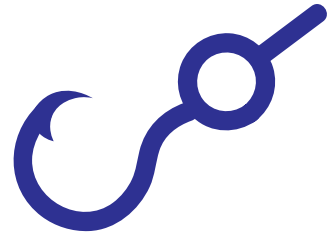


cat

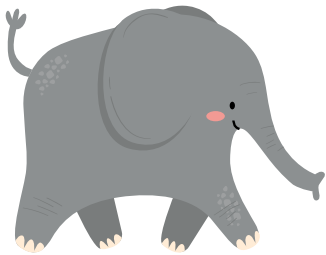
# Match the Rhyming Words



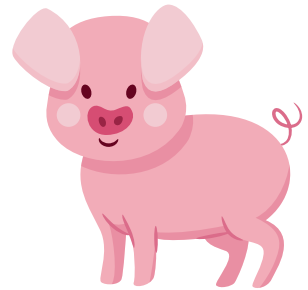
bee



hook



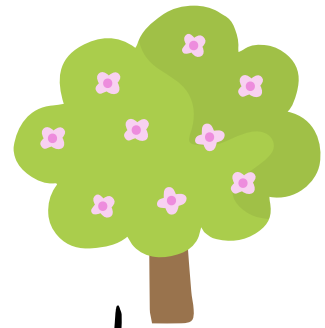
big



pig



box



tree



book

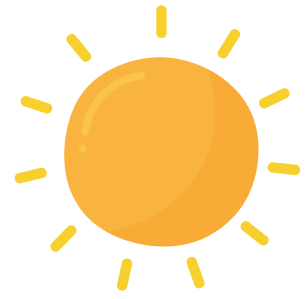


fox

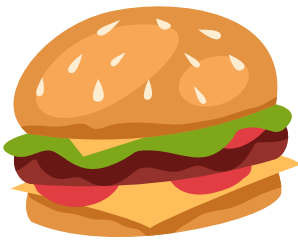
# Match the Rhyming Words



bug



sun



bun



mug



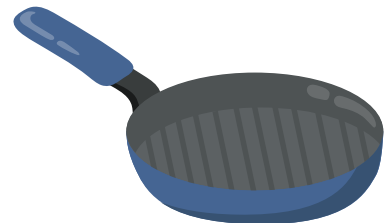
can



jar



car



pan



# Match the Rhyming Words



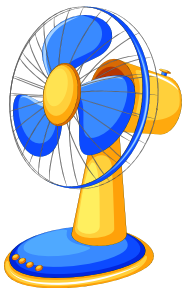
cat



cub



cut



fan



nut



man

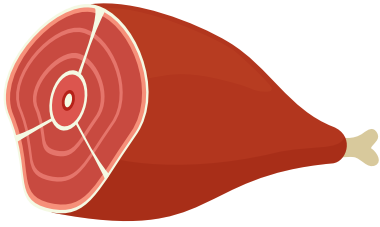


tub

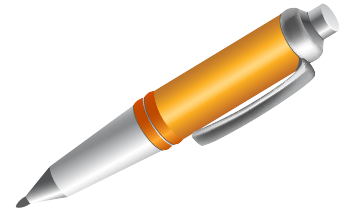


hat

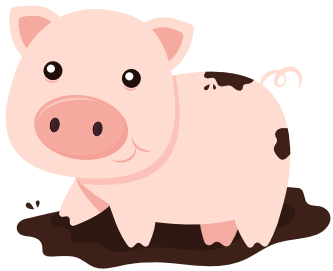
# Match the Rhyming Words



ham



pen



pig



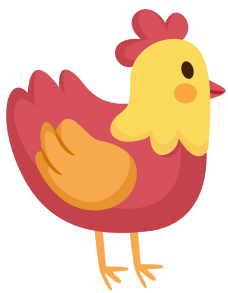
frog



dog



dig



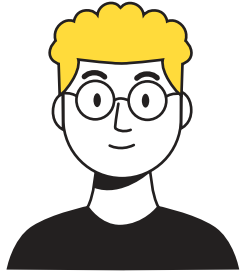
hen



yam



# Match the Rhyming Words



he



vet



hop



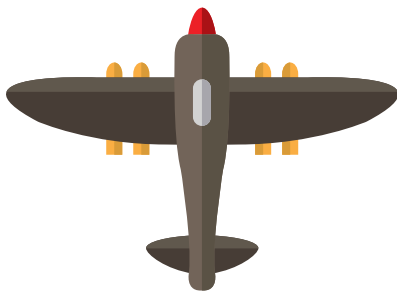
she



jam



mop



jet



ram

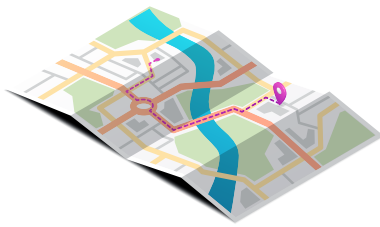
# Match the Rhyming Words



mail



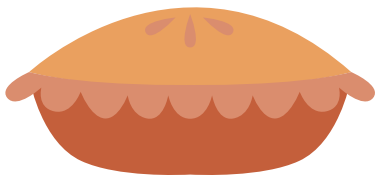
nap



map



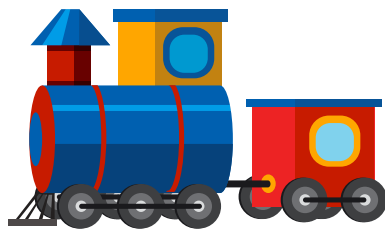
rain



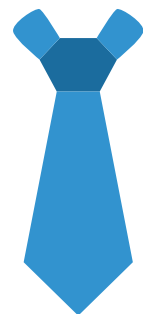
pie



snail



train



tie

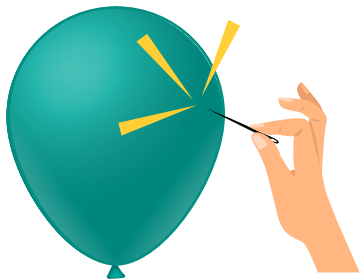
# Match the Rhyming Words



pin



cat



pop



win



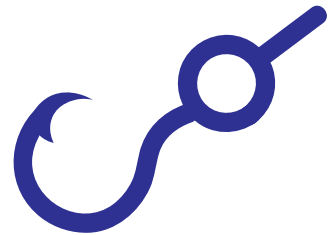
book



stop

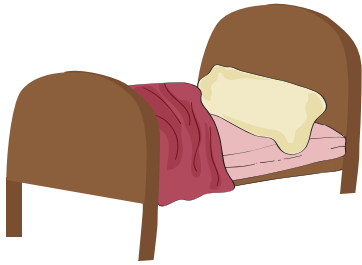


bat



hook

# Match the Rhyming Words



bed



jar



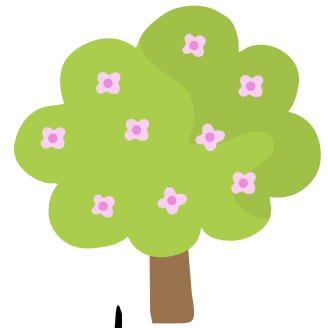
bee



red



bug



tree



car



mug



# Match the Rhyming Words



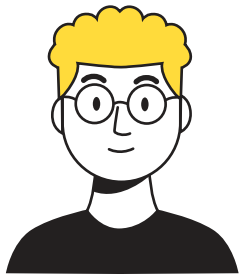
mail



cut



dog



he



nut



she



snail



frog

# Circle the Rhyming Word



mail



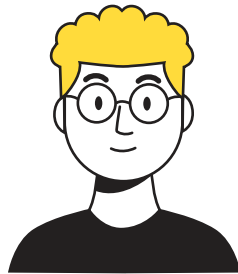
nut



frog



snail



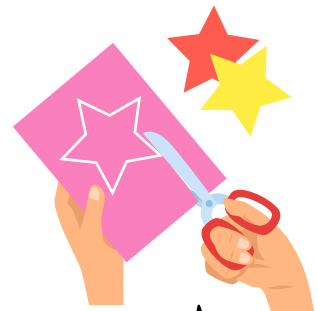
he



she



dog



cut

# Circle the Rhyming Word



ball



boat



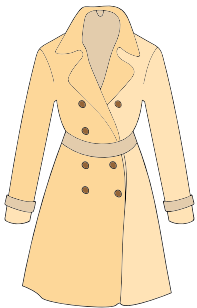
tall



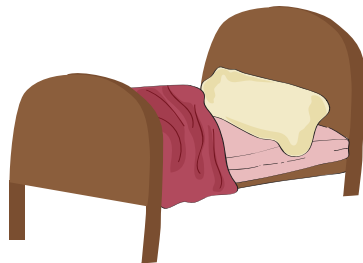
red



bat



coat

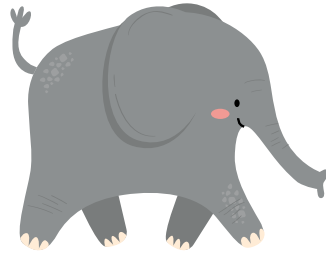


bed



cat

# Circle the Rhyming Word



big



pig



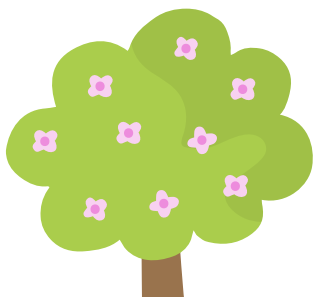
mail



book



box



tree



fox



frog



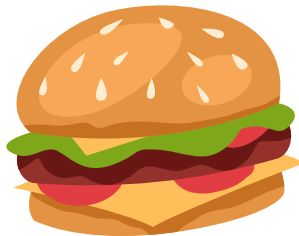
# Circle the Rhyming Word



bug



can



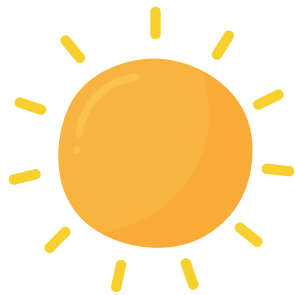
bun



mug



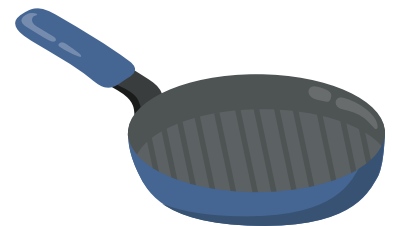
car



sun



jar



pan

# Circle the Rhyming Word



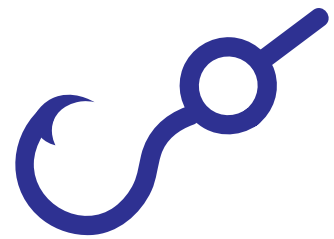
cat



man



hat



hook



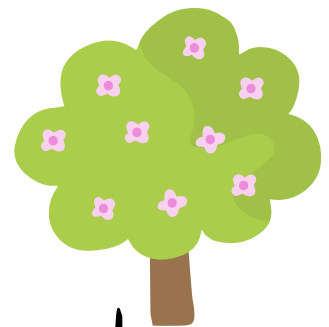
bee



red



snail



tree

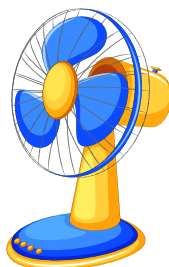
# Circle the Rhyming Word



cub



tub



fan



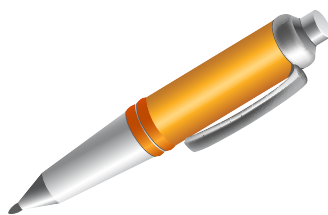
dig



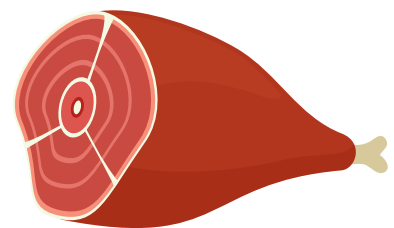
hen



pig

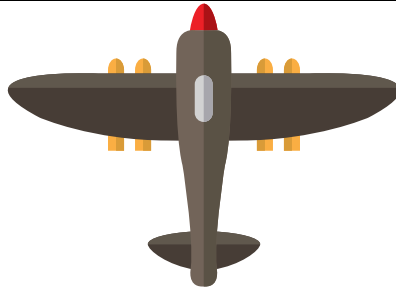


pen



ham

# Circle the Rhyming Word



jet



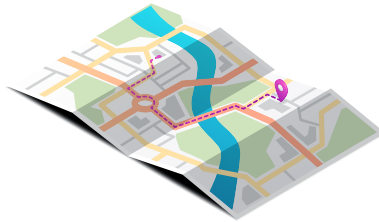
jam



ram



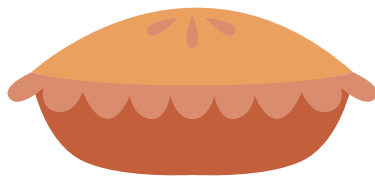
vet



map



nap

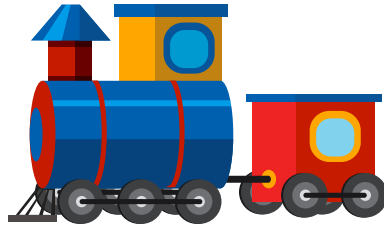


pie

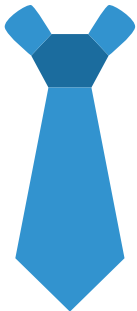


hop

# Circle the Rhyming Word



train



tie



hat



rain



pin



bat



win

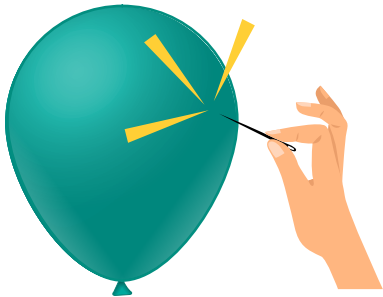


book

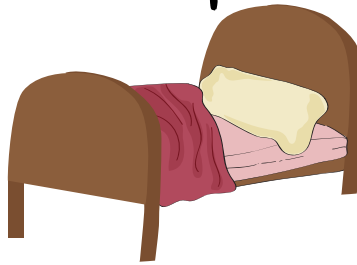
# Circle the Rhyming Word



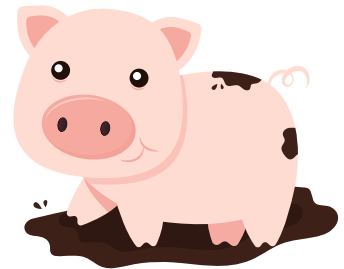
stop



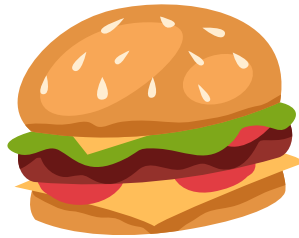
pop



bed



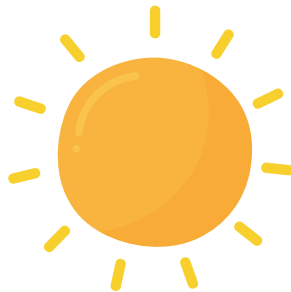
pig



bun



cub



sun



ram

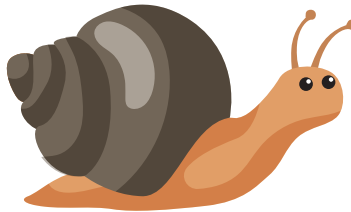
# Circle the Rhyming Word



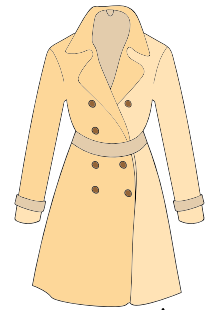
boat



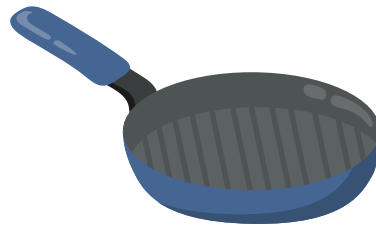
dog



snail



coat



pan



can



tub



bug