

GEOGRAPHY





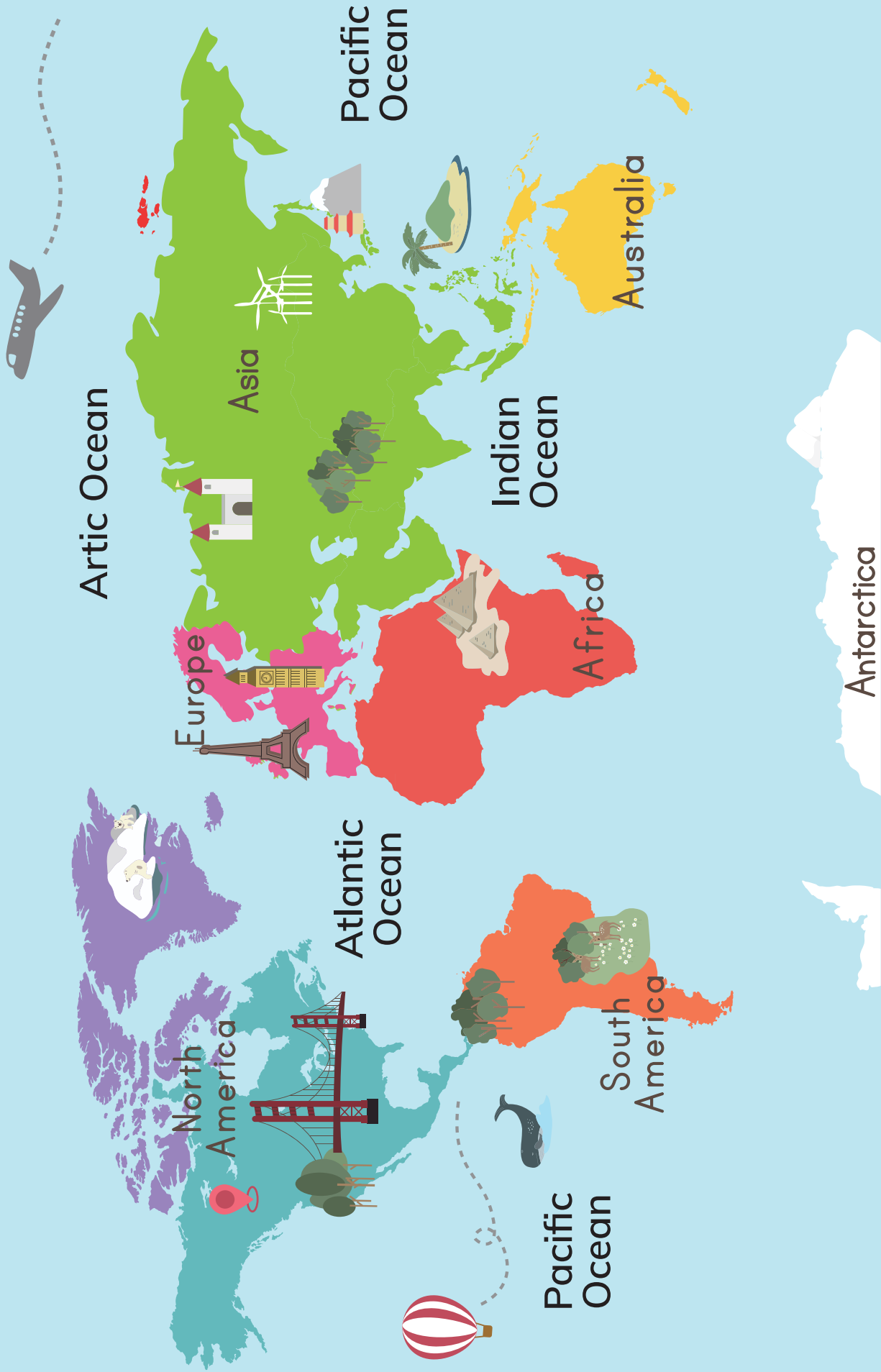
This Book belongs to:

I live in a continent called:

I live in a country called:

I was born in a city or town called:

World Map



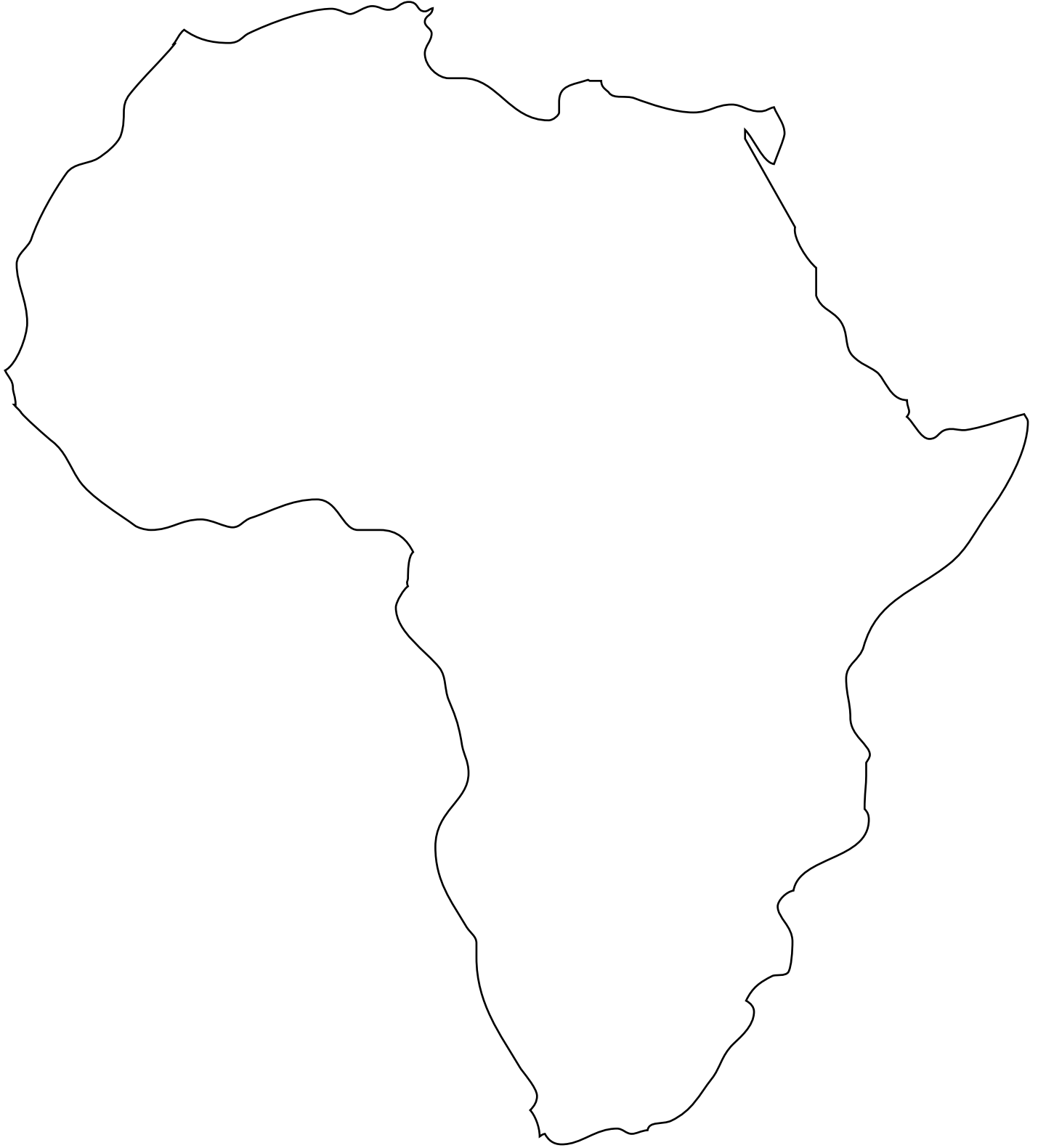
Europe

Color the continent.



Africa

Color the continent.



Asia

Color the continent.



North America

Color the continent.



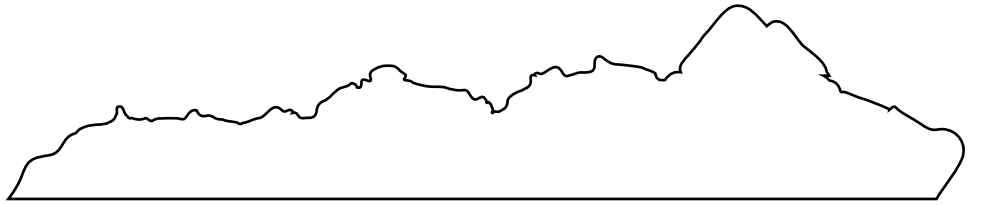
South America

Color the continent.



Antarctica

Color the continent.



I Know My Geography

1 - How many continents are there in the world?

2 - What is the largest continent?

3 - What is the smallest continent?

4 - Which continent has the most population in the world?

5 - How many Oceans are there in the world?

Answer Key: 7, Asia, Australia, Asia, 4

Most Populous Countries



- 1 _____
- 2 _____
- 3 _____
- 4 _____
- 5 _____



Indonesia, China, India,
Pakistan, United State,

Answer key: China, India, United States, Indonesia, Pakistan



Match The Continents

Draw a line to match name with the continent.

North America ●



Africa ●



Europe ●



Australia ●



South America ●



Antarctica ●



Asia ●



Match The Continents By Shadow

Draw a line to match name with the continent shadow.

Asia



Antarctica



Australia



North America



Africa



Europe



South America



Word Search

Find and circle the words listed below.

H	I	E	U	R	O	P	E	U	A	R	H	S	R
R	A	I	A	H	P	A	I	R	T	A	E	P	E
A	T	P	A	F	R	I	A	F	R	I	C	A	I
I	T	A	U	S	T	R	A	L	I	A	C	C	C
S	O	U	T	H	C	C	W	X	R	C	A	I	C
A	C	A	H	N	H	R	R	R	F	P	T	F	R
C	O	A	I	N	A	E	D	O	L	I	A	I	A
A	N	C	A	N	C	O	L	I	I	O	C	C	E
R	T	A	S	I	A	T	R	T	O	O	T	M	R
N	I	R	O	I	T	N	O	R	T	H	T	G	O
E	N	A	N	A	E	A	W	N	W	O	O	O	D
T	E	E	A	R	T	I	C	R	M	U	E	N	N
I	N	A	M	E	R	I	C	A	H	M	I	A	C
L	T	T	A	N	T	A	R	C	T	I	C	A	L

■ Pacific

■ Asia

■ South

■ Africa

■ World

■ Europe

■ Antarctica

■ North

■ Australia

■ America

■ Continent

■ Artic

Continent Crosswords

Write the names of the continents to complete the crossword puzzle.

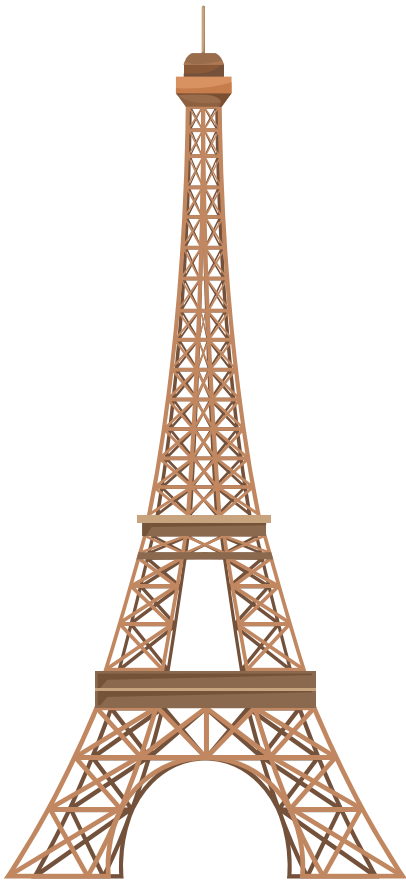
The crossword puzzle grid consists of 10 columns and 10 rows of empty cells. The starting points for the words are as follows:

- 1:** 10 cells across, starting at row 9, column 1.
- 2:** 6 cells across, starting at row 7, column 1.
- 3:** 3 cells down, starting at row 5, column 4.
- 4:** 1 cell down, starting at row 3, column 2.
- 5:** 8 cells across, starting at row 3, column 1.
- 6:** 6 cells down, starting at row 3, column 8.
- 7:** 10 cells across, starting at row 3, column 9.

Surrounding maps and their corresponding numbers:

- 1:** Antarctica (light blue)
- 2:** Africa (purple)
- 3:** Asia (green)
- 4:** South America (yellow)
- 5:** North America (pink)
- 6:** Europe (red)
- 7:** Australia (orange)

12 Popular Sites In The World



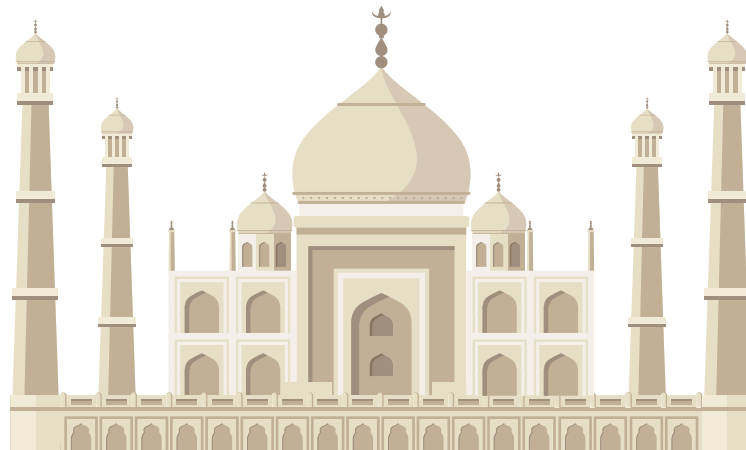
EIFFEL TOWER
(FRANCE)



CHRIST THE
REDEEMER
(BRAZIL)



STATUE OF LIBERTY
(UNITED STATES)



THE TAJ MAHAL
(INDIA)

12 Popular Sites In The World



SYDNEY OPERA HOUSE
(AUSTRALIA)



THE PYRAMID OF GIZA
(EGYPT)



MACHU PICCHU
(PERU)

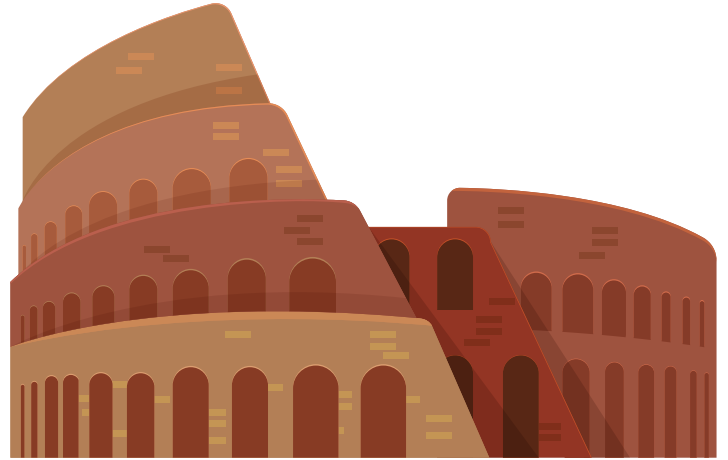


THE CHICHEN ITZA
(MEXICO)

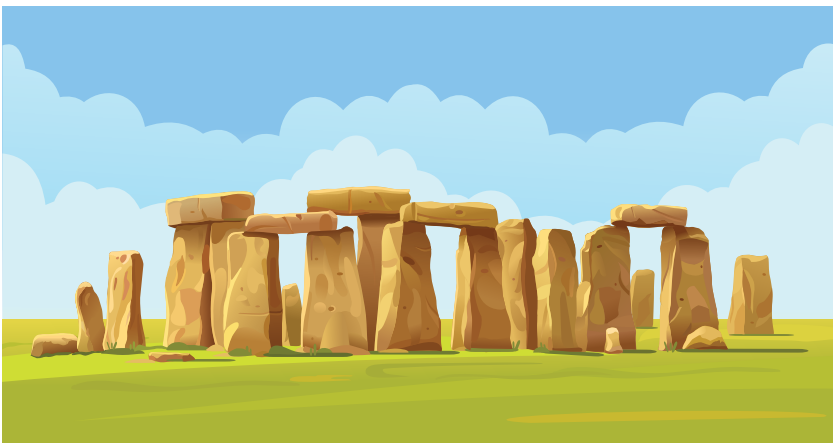
12 Popular Sites In The World



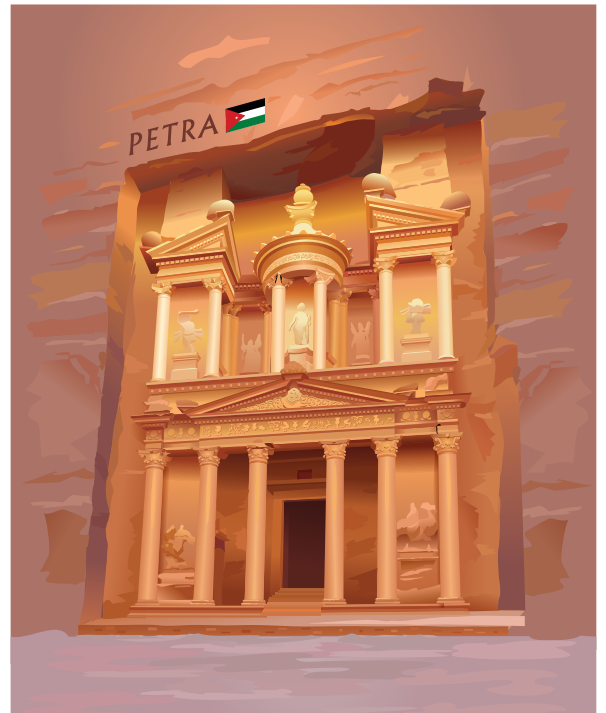
THE GREAT WALL OF CHINA
(CHINA)



THE COLOSSEUM
(ITALY)



STONEHENGE
(ENGLAND)



PETRA
(JORDAN)

Match Popular Sites By Continent

Draw a line to match site with the continent name they are located in.



● **Europe**



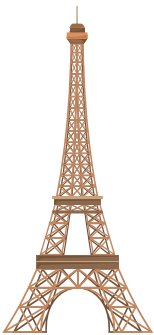
● **Asia**



● **South America**



● **Europe**



● **North American**



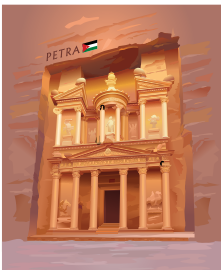
● **Asia**

Match Popular Sites By Continent

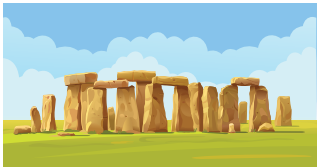
Draw a line to match site with the continent name they are located in.



● **South America**



● **Australia**



● **North American**



● **Asia**



● **Europe**



● **Africa**

Match Popular Sites By Countries

Draw a line to match site with the country name they are located in.



● **United State**



● **England**



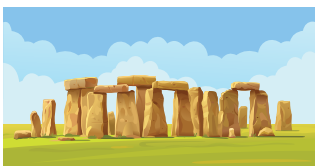
● **Egypt**



● **Mexico**



● **Italy**



● **Peru**

Match Popular Sites By Countries

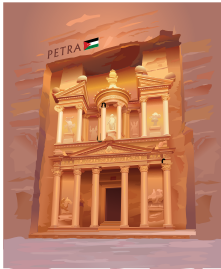
Draw a line to match site with the country name they are located in.



● **China**



● **Jordan**



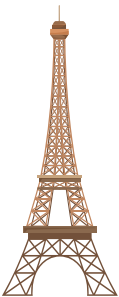
● **India**



● **Australia**



● **France**



● **Brazil**

Geography Things

River



A river is a ribbon-like body of water that flows downhill from the force of gravity.

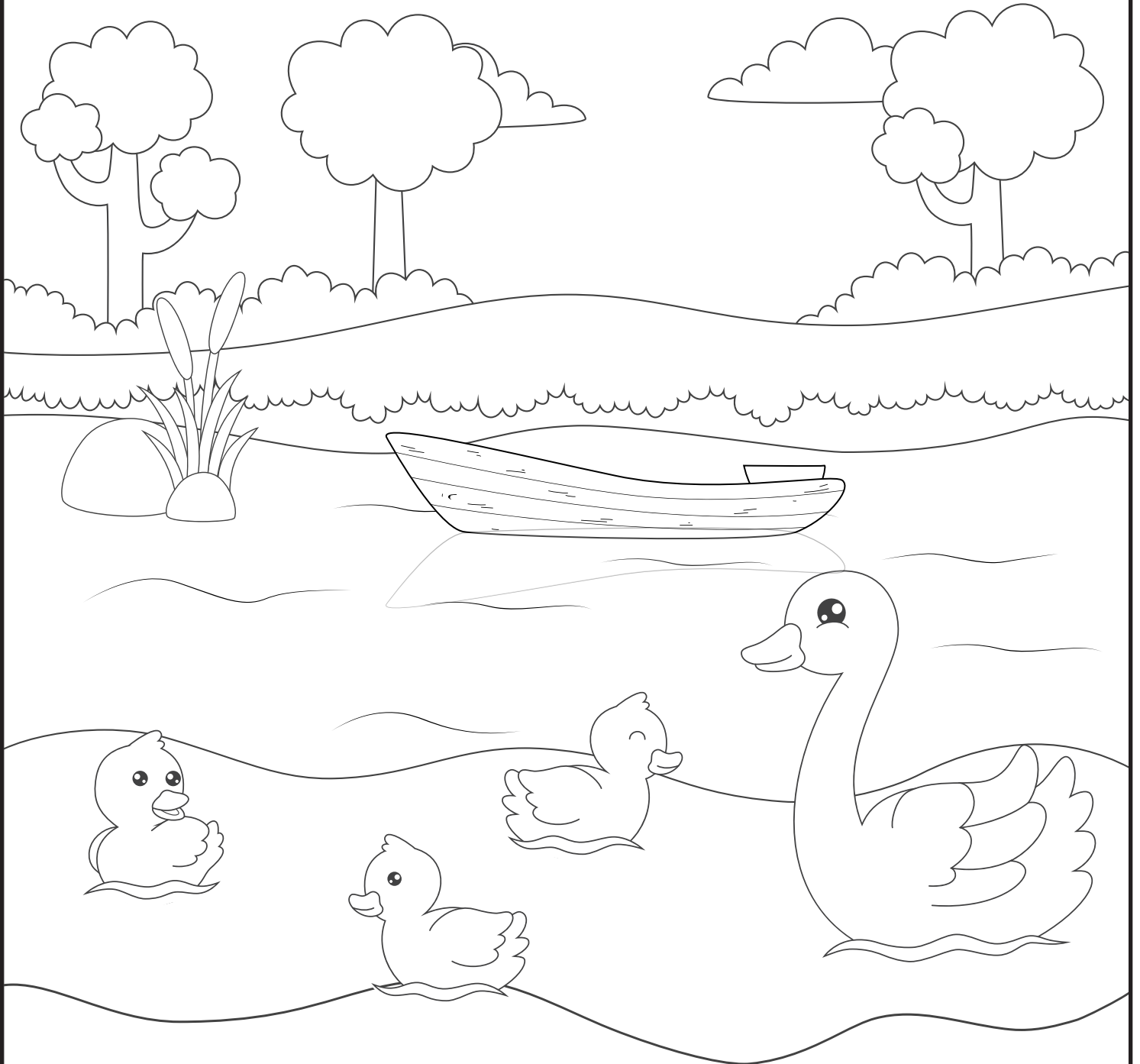
Ocean



The ocean is a huge body of saltwater that covers about 71 percent of Earth's surface.

Geography Things

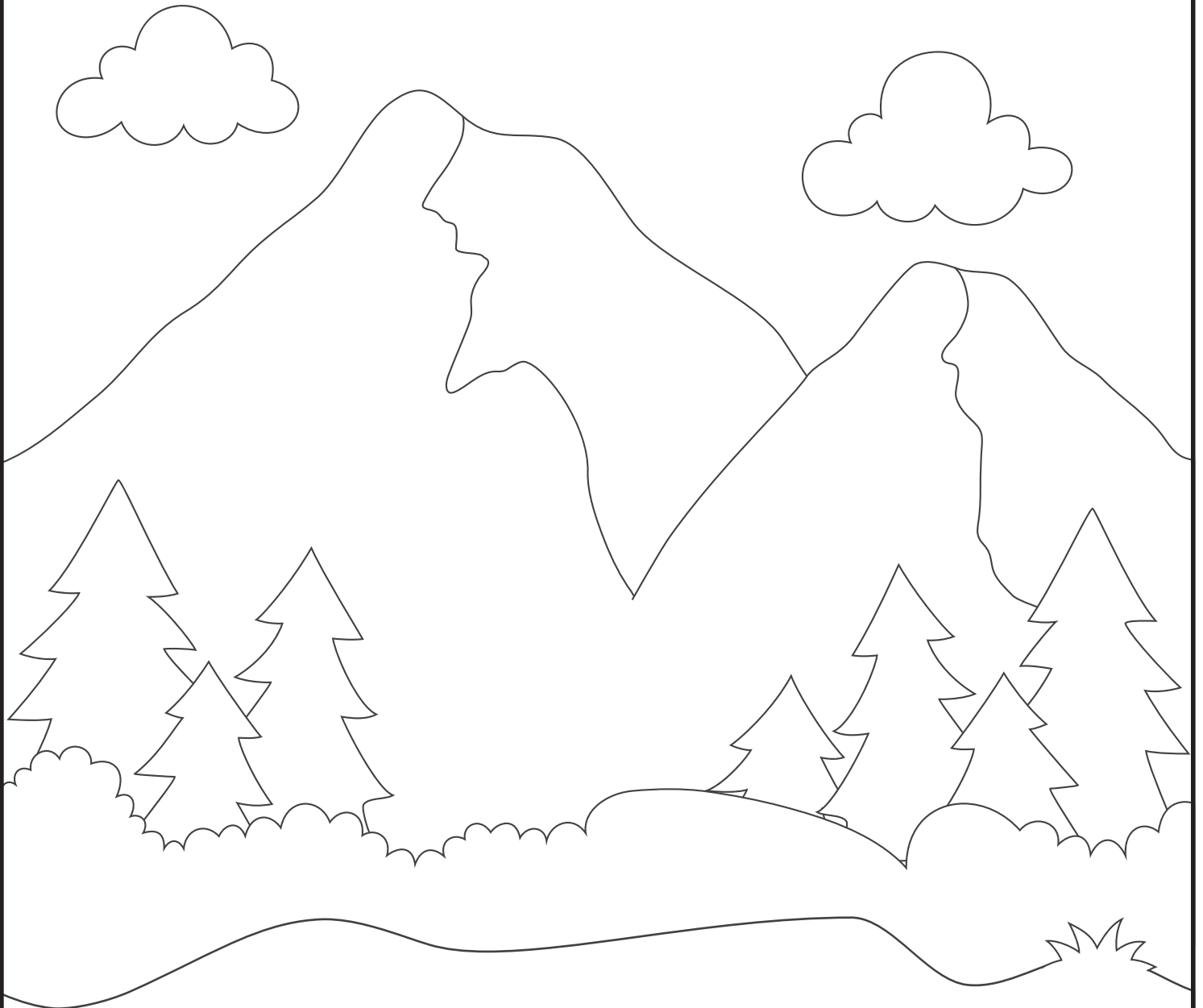
Lake



Lake is any relatively large body of slowly moving or standing water that occupies an inland basin of appreciable size.

Geography Things

Mountain



A mountain is an elevated portion of the Earth's crust, generally with steep sides that show significant exposed bedrock.

Geography Things

Valley



A low area of land between hills or mountains, typically with a river or stream flowing through it.

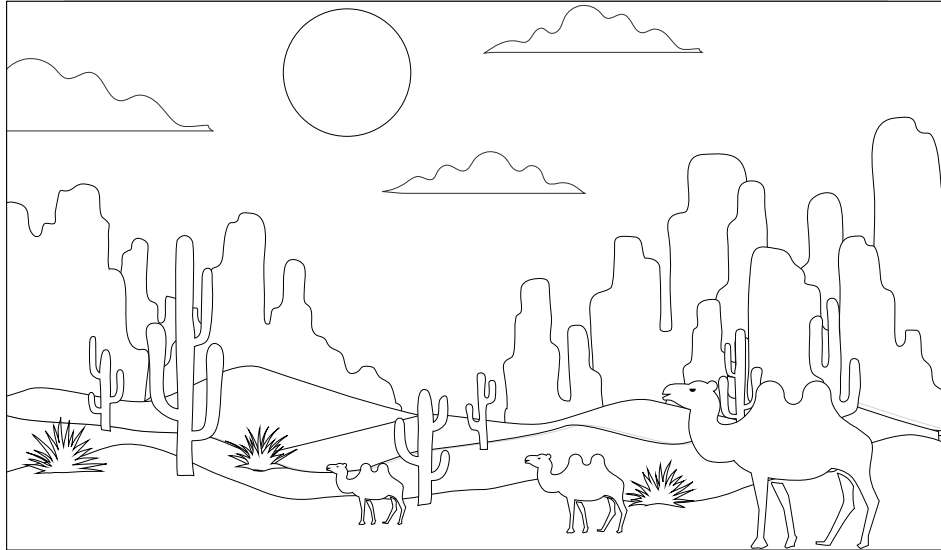
Island



An island is a body of land surrounded by water.

Geography Things

Desert



A desert is a barren area of landscape where little precipitation occurs and, consequently, living conditions are hostile for plant and animal life.

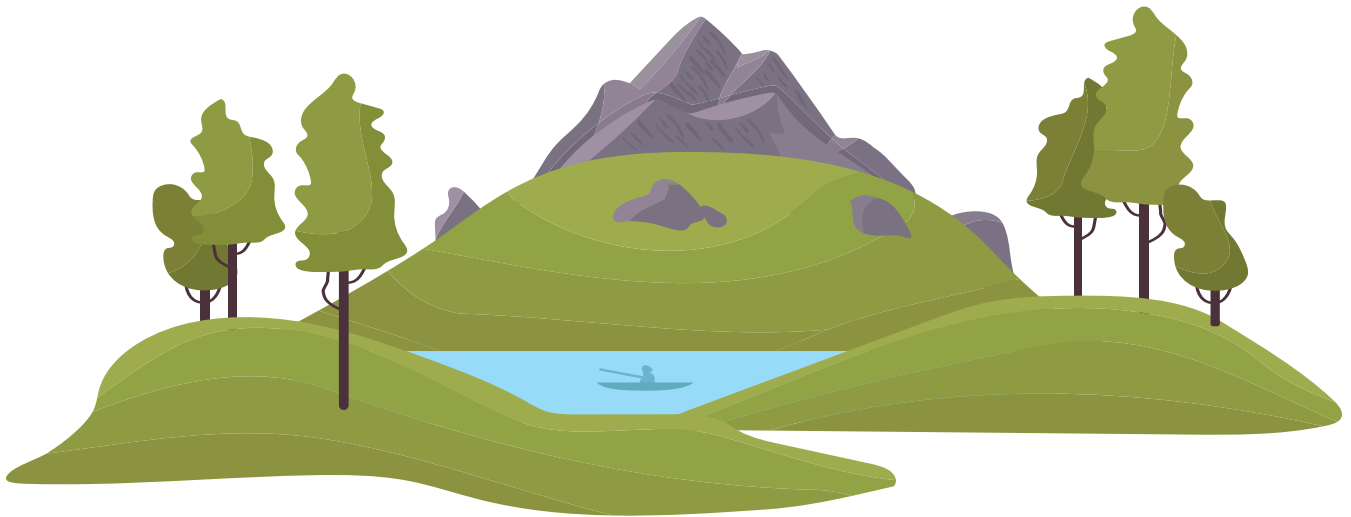
Jungle



A jungle is land covered with dense forest and tangled vegetation, usually in tropical climates.

Geography Things

Hills



A hill is a piece of land that rises higher than everything surrounding it. It looks like a little bump in the Earth.

Volcano



A volcano is an opening in the earth's crust through which lava, volcanic ash, and gases escape.

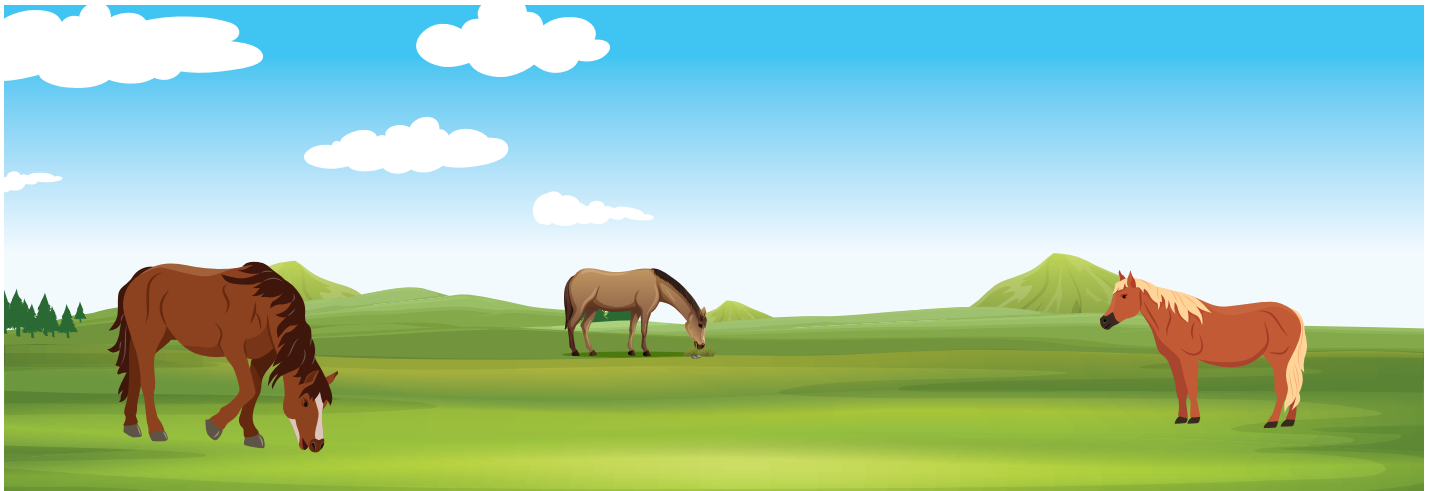
Geography Things

Waterfall



A waterfall is a point in a river or stream where water flows over a vertical drop or a series of steep drops.

Plain



A plain is a flat expanse of land that generally does not change much in elevation, and is primarily treeless.

Compass

N = North

S = South

E = East

W = West

