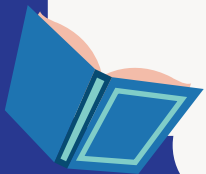




Alphabet Activities

Table of Contents

Matching letters	Page 2
Missing letters	Page 9
Color bubble letters	Page 17
Trace letters	Page 22
Circle the letters	Page 28
Dot to dot	Page 35
Color by letter codes	Page 38
Alphabet posters	Page 41



Match the uppercase letter to its lowercase :



Cake

C •

• a



Elephant

E •

• d



Balloon

B •

• c



Apple

A •

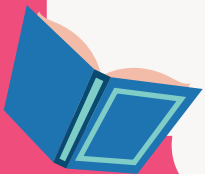
• b



Donut

D •

• e



Match the uppercase letter to its lowercase :



Hand

H



j



Jellyfish

J



i



Fish

F



g



Ice cream

I



h

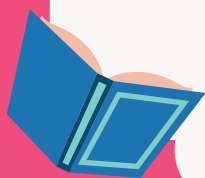


Gift

G



f



Match the uppercase letter to its lowercase :



Lemon

L •

• k



Olive

O •

• m



Kiwi

K •

• n



Nail

N •

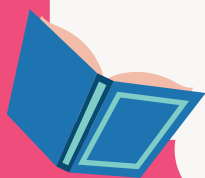
• o



Mouse

M •

• l



Match the uppercase letter to its lowercase :



Snake

S •

• r



Queen

Q •

• p



Pineapple

P •

• t



Tree

T •

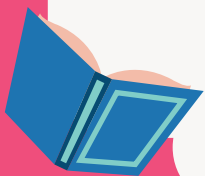
• s



Rocket

R •

• q



Match the uppercase letter to its lowercase :



W ●

● y



V ●

● X



Y ●

● W



U ●

● Z



Z ●

● v



X ●

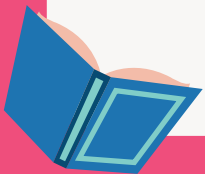
● U



Match the uppercase letter to its lowercase :

A ●
B ●
C ●
D ●
E ●
F ●
G ●
H ●
I ●
J ●
K ●
L ●
M ●

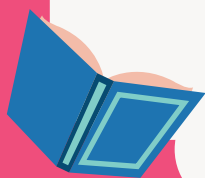
● e
● g
● f
● C
● i
● k
● b
● a
● m
● d
● j
● h
● l



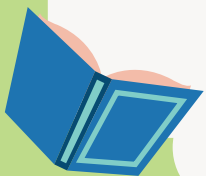
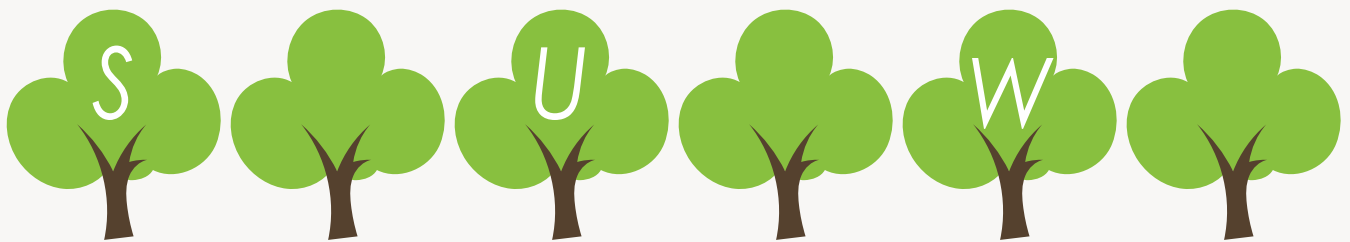
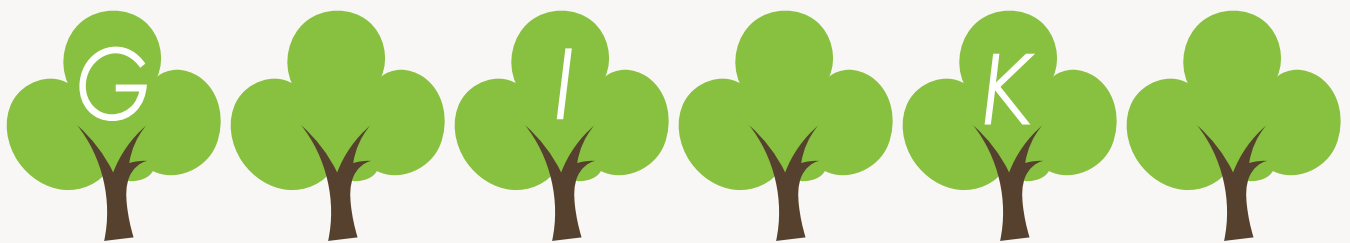
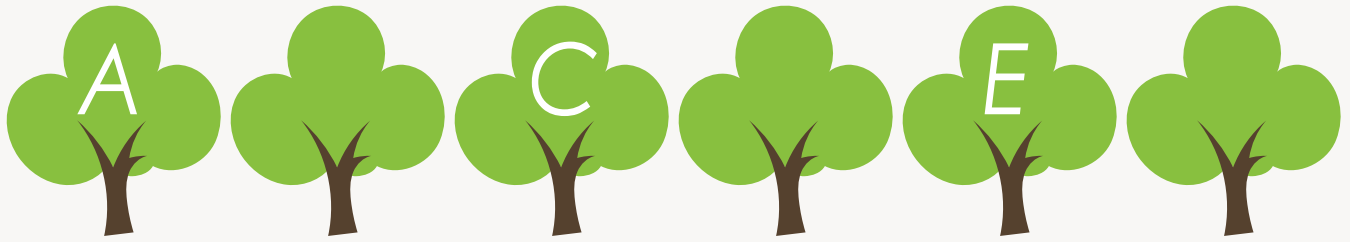
Match the uppercase letter to its lowercase :

- N ●
- O ●
- P ●
- Q ●
- R ●
- S ●
- T ●
- U ●
- V ●
- W ●
- X ●
- Y ●
- Z ●

- p
- r
- v
- y
- U
- O
- w
- x
- n
- q
- z
- t
- s



Fill in the missing letter :



Finish the alphabet :

Aa		Cc
	Ee	
Gg		li



Aa Ee Bb
Ff Hh Dd
Cc li Gg



Fill in the missing letters :

Jj		Ll
	Nn	
Pp		Rr



Jj Ll
Kk Nn
Oo Rr Mm Pp Qq



Fill in the missing letters :

Rr		Tt
	Vv	
Xx		Zz

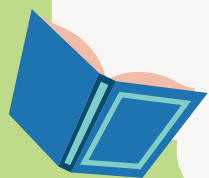


Rr Yy Vv
Zz Ss Ww
Tt Xx Uu



Fill in the missing letters :

__ B C	a __ c
D __ F	__ e f
__ H __	g __ i
J K __	__ k __
M __ O	__ n __
__ __ R	p __ r
S __ U	__ t __
V __ X	__ w x
__ Z	__ Z



Fill in the missing letters :



...QUEEN



...ISH



...AKE



...EMON



...REE



...IFT



...ATERMELON



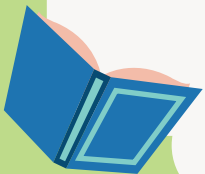
...IWI



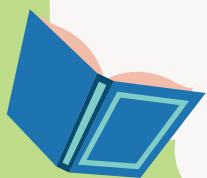
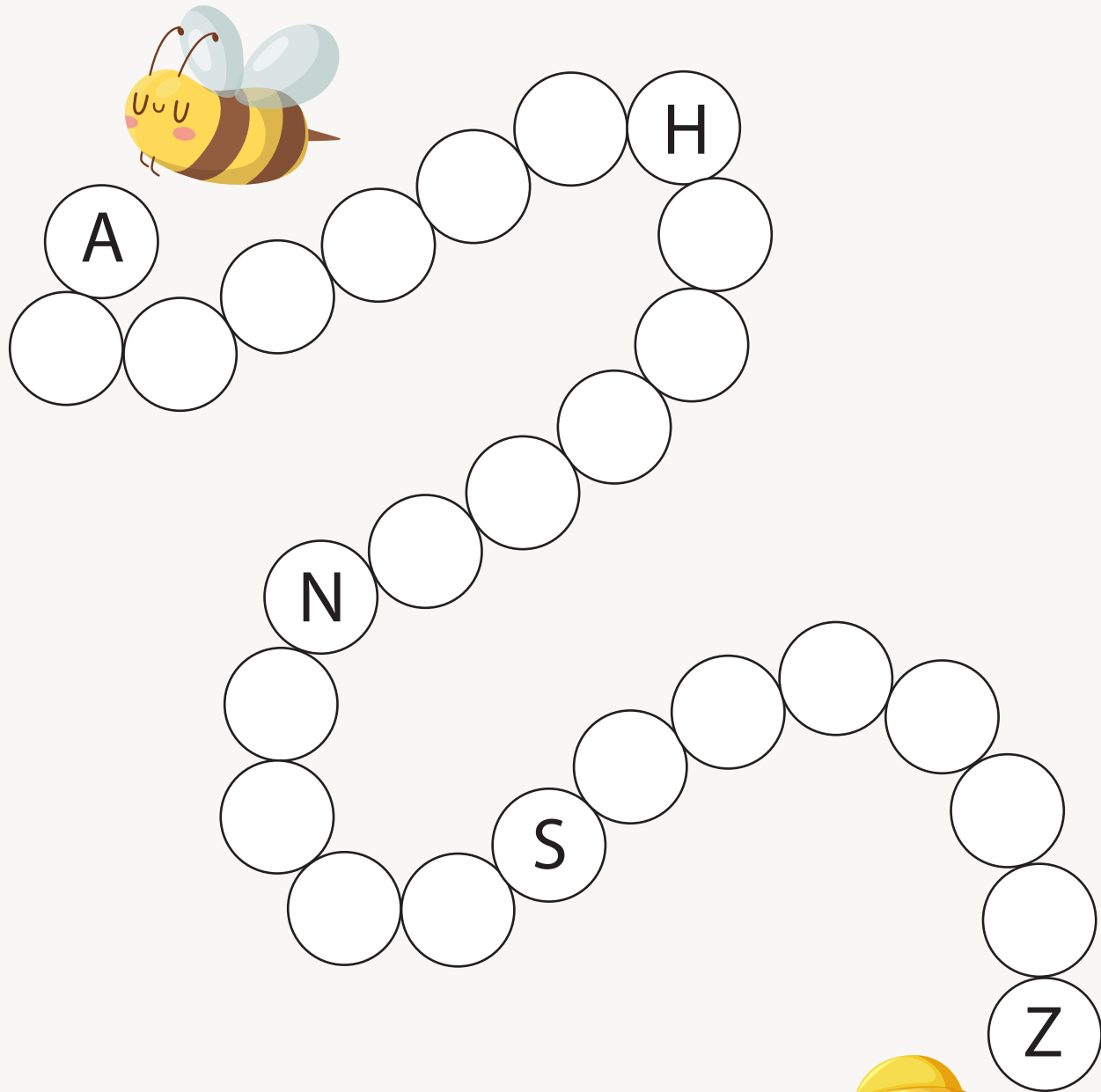
...PPLE



...MBRELLA



Fill in the missing letters :



Fill in the missing letters :

a					
---	--	--	--	--	--

					g
--	--	--	--	--	---

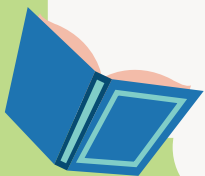
--	--	--	--	--	--

n					
---	--	--	--	--	--

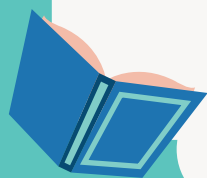
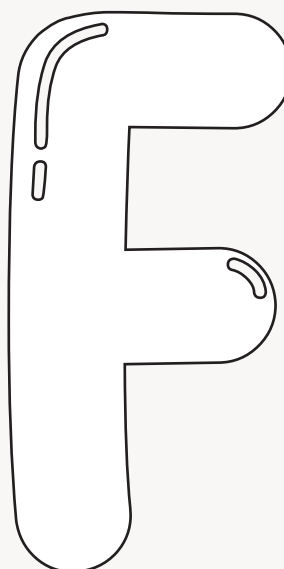
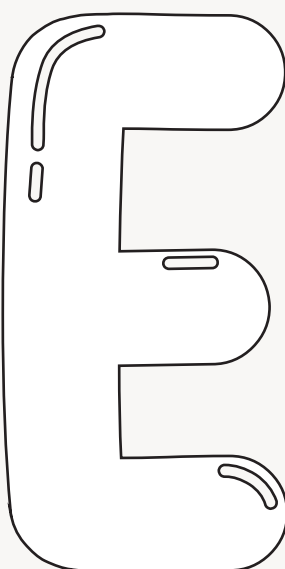
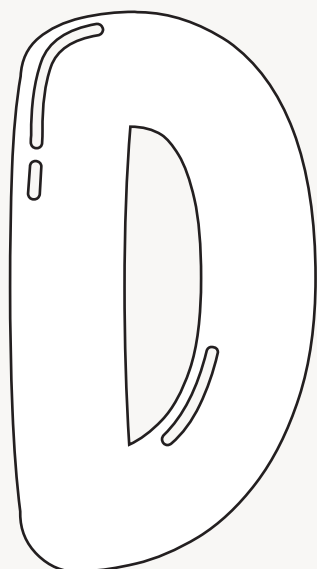
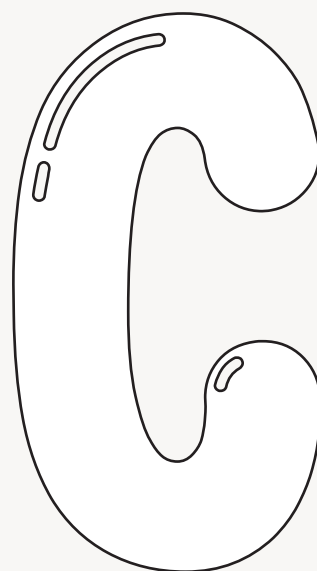
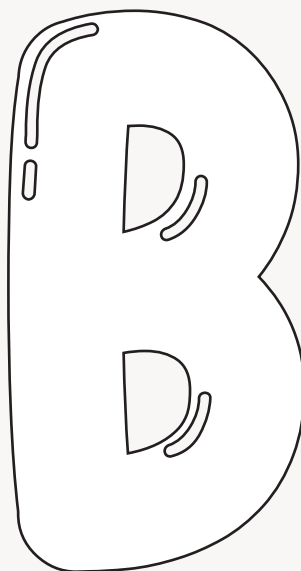
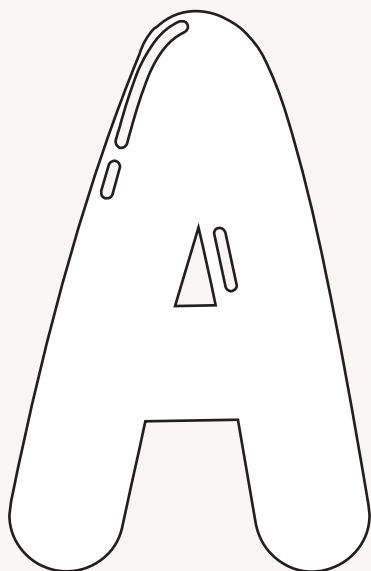
			r		
--	--	--	---	--	--

--	--	--	--	--	--

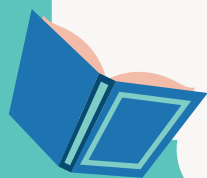
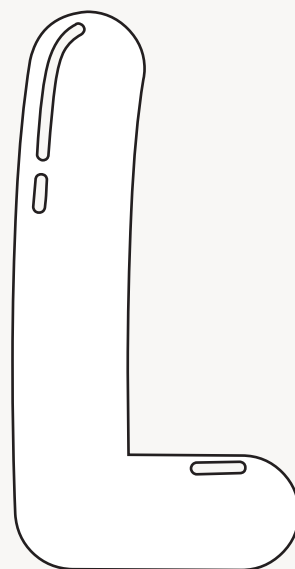
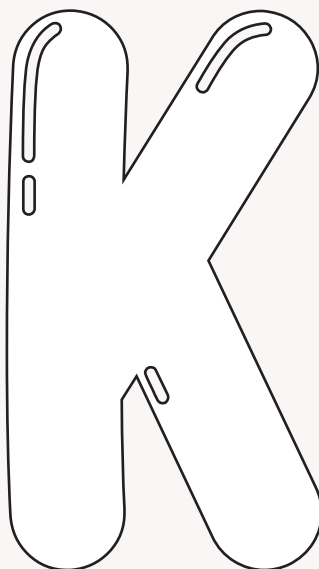
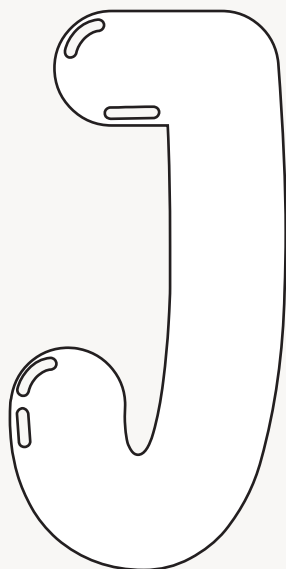
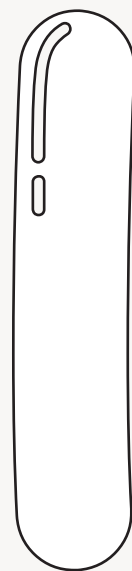
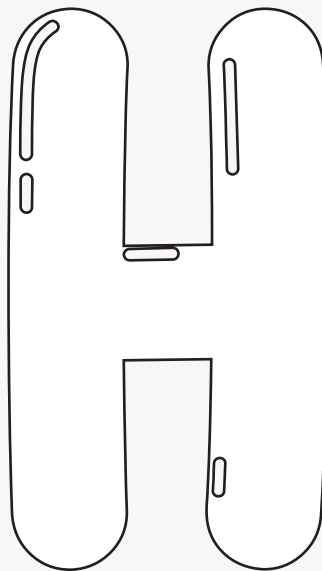
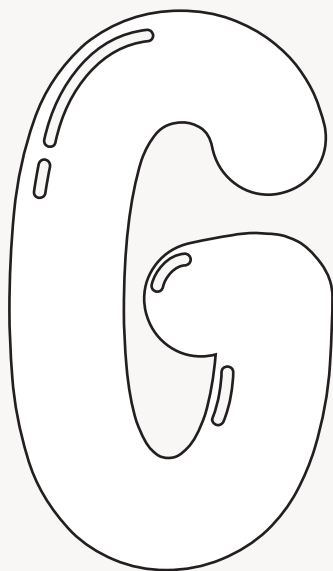
z				
---	--	--	--	--



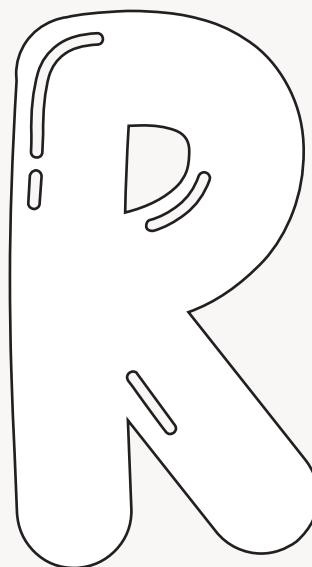
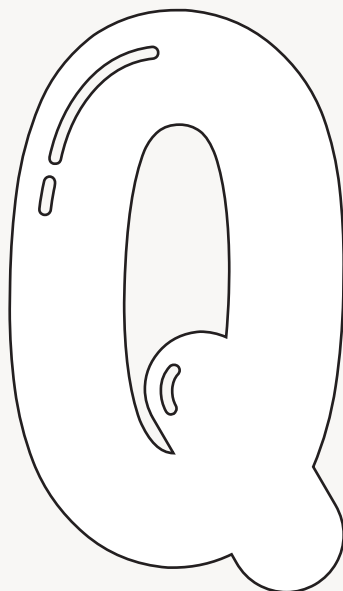
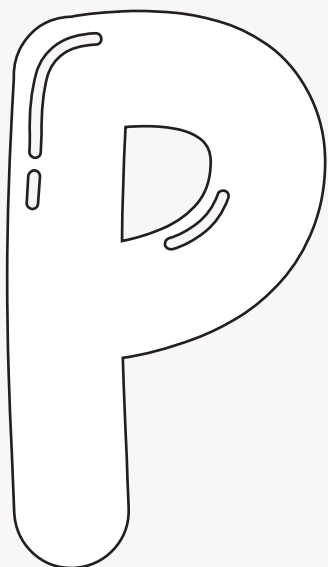
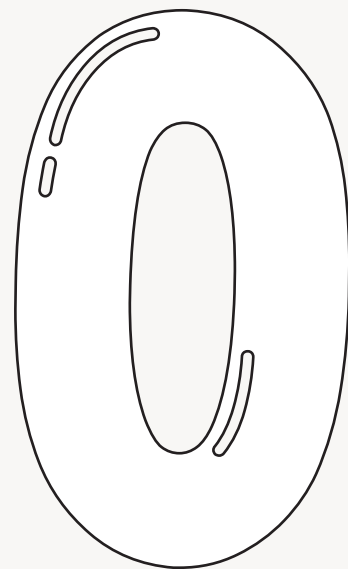
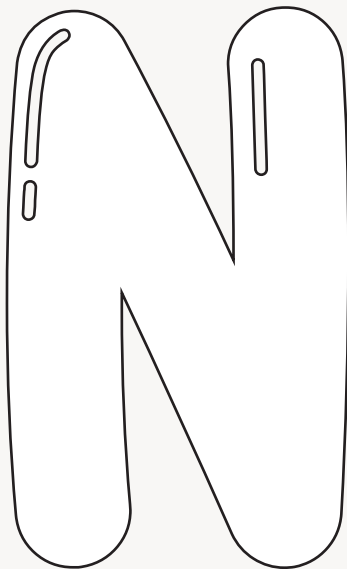
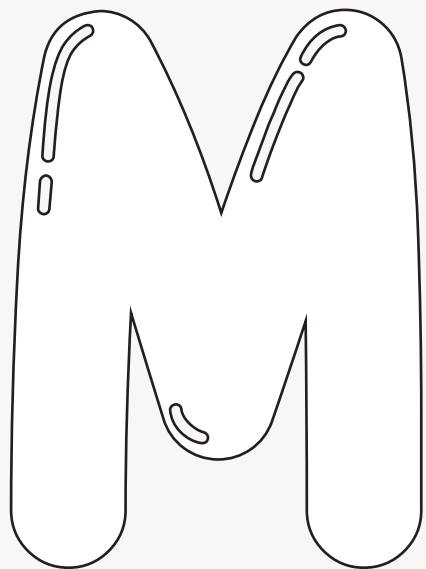
Color the bubble letters with the color bellow :



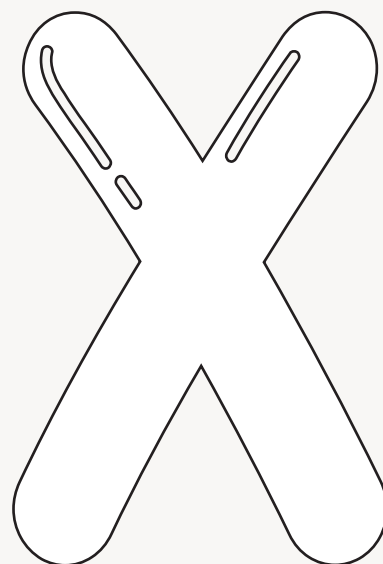
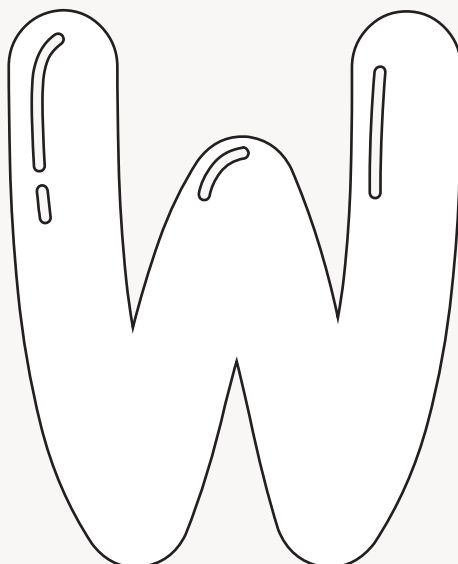
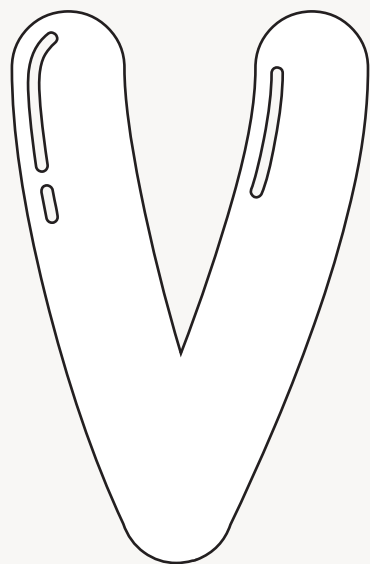
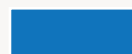
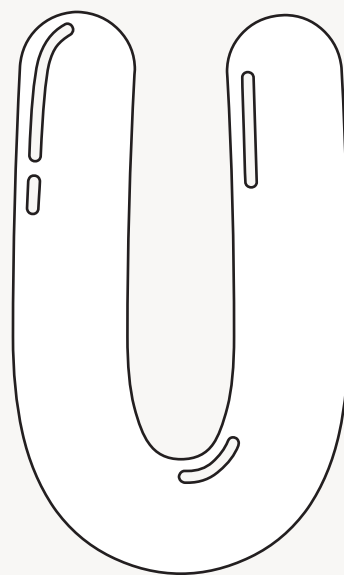
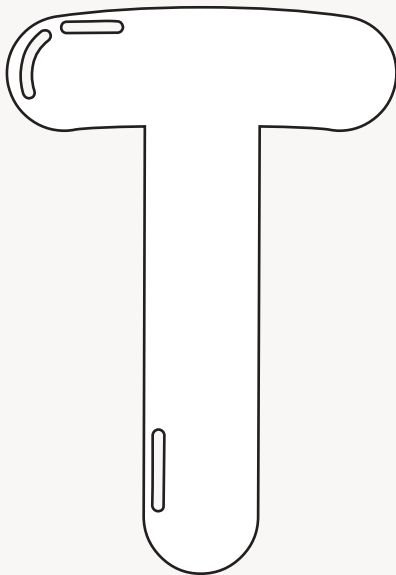
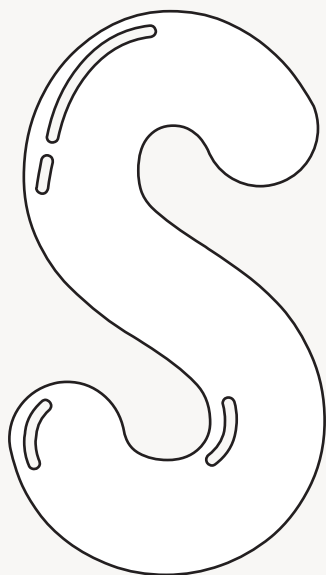
Color the bubble letters with the color bellow :



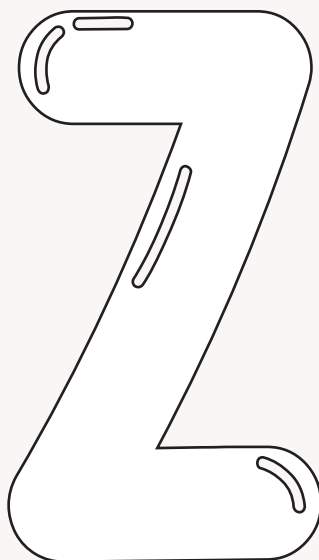
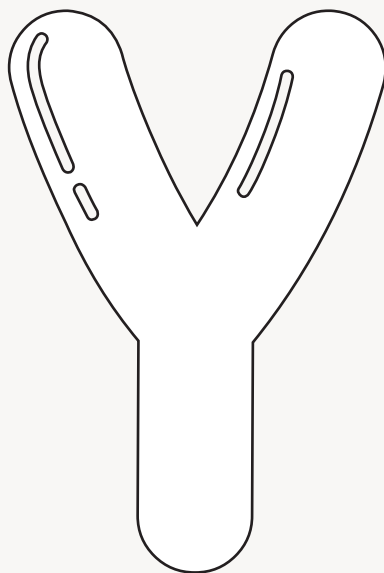
Color the bubble letters with the color bellow :



Color the bubble letters with the color bellow :



Color the bubble letters with the color bellow :



Trace the alphabet :



A

B

C

D

E

F

G

H

I

J

K

L

M

N

O

P

Q

R

S

T

U

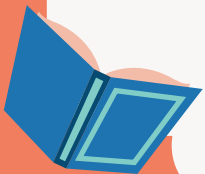
V

W

X

Y

Z



Trace the alphabet :



Handwriting practice lines for tracing the alphabet. The letters are arranged in rows on a set of four horizontal lines (top yellow, middle green, bottom yellow, baseline white). Each letter is shown as a dashed outline for tracing.

Row 1: a b c d e

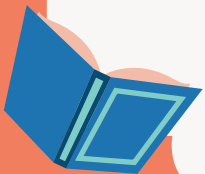
Row 2: f g h i j

Row 3: k l m n o

Row 4: p q r s t

Row 5: u v w

Row 6: x y z



Trace and match the alphabet :

A



B



C



D



E



F



c



e



b



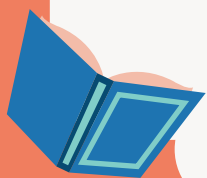
d



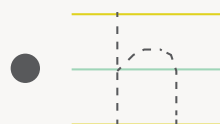
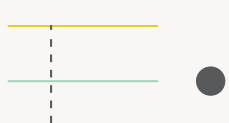
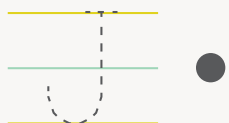
f



d



Trace and match the alphabet :



Trace and match the alphabet :

M •

N •

O •

P •

Q •

R •

S •

• O

• q

• m

• p

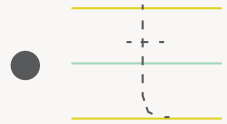
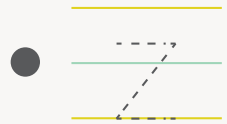
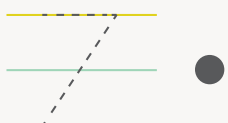
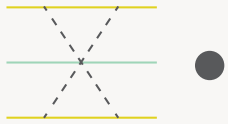
• s

• n

• r



Trace and match the alphabet :





Circle the matching lowercase letter in each row :

A ■ a n j d k

B ■ b f e z s

C ■ m c v e a

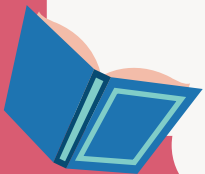
D ■ a z w d p

E ■ e l h m a

F ■ b d s m f

G ■ o g a d y

H ■ d v k h z





Circle the matching lowercase letter in each row :

I ■ b a i f t

J ■ e j i a o

K ■ k d e a c

L ■ f s q d l

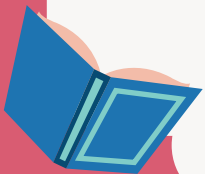
M ■ a z h m n

N ■ y n l m p

O ■ o t g u y

P ■ b i k p y

Q ■ w b q h r





Circle the matching lowercase letter in each row :

R ■ r e j g a

S ■ z c t a s

T ■ i t k y a

U ■ o t g h u

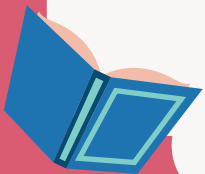
V ■ h n v z r

W ■ w v b g p

X ■ b i k x p

Y ■ w a r p y

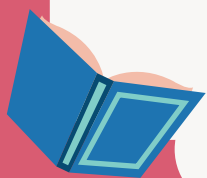
Z ■ b z i g o



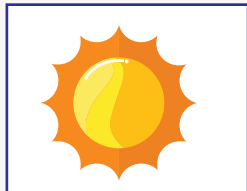
Circle lowercase letters :

A large circle with a dashed red border contains the following letters:

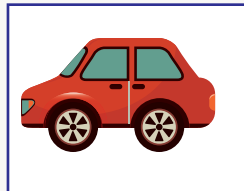
- Row 1: G, b, C
- Row 2: m, A, D, e
- Row 3: E, y, P, F, M
- Row 4: d, B, i, n
- Row 5: J, H, h, j, H
- Row 6: e, f, a, d
- Row 7: H



Circle the beginning sound for each picture :



S N



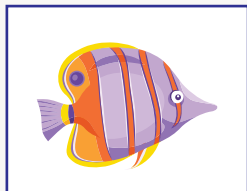
C O



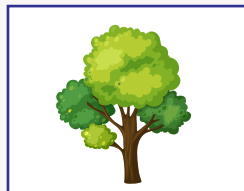
U A



R B



F Z



A T



P J



T B



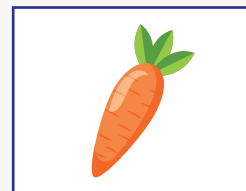
E H



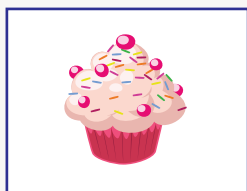
I L



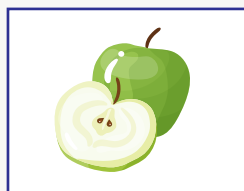
G D



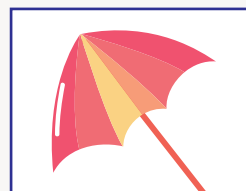
O C



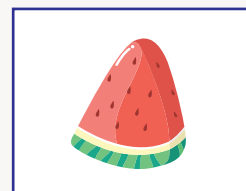
S C



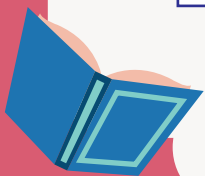
A E



N U



V W



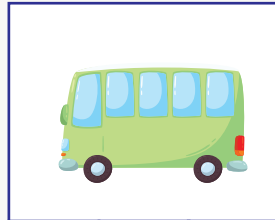
Circle the beginning sound for each picture :



N S Q



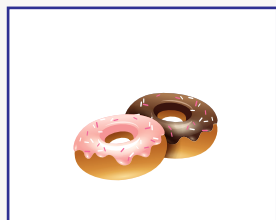
M D H



V J B



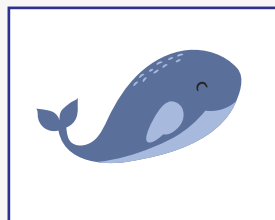
V J B



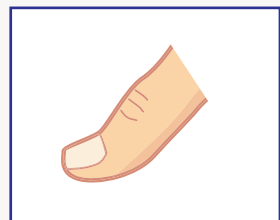
R D F



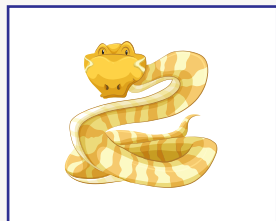
I O H



E W P



N L K



M S T



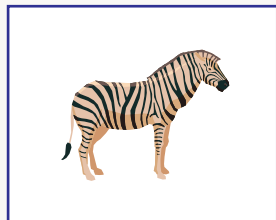
A Q P



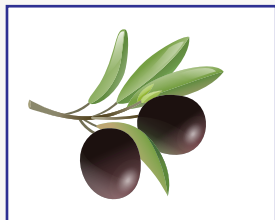
L X U



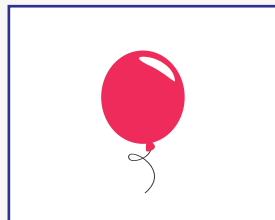
C L E



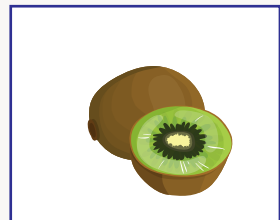
Z W X



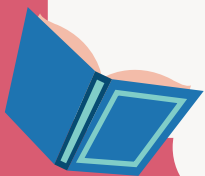
L O R



G E B

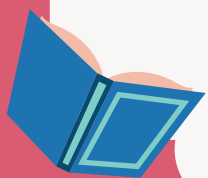


K T H

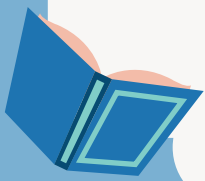
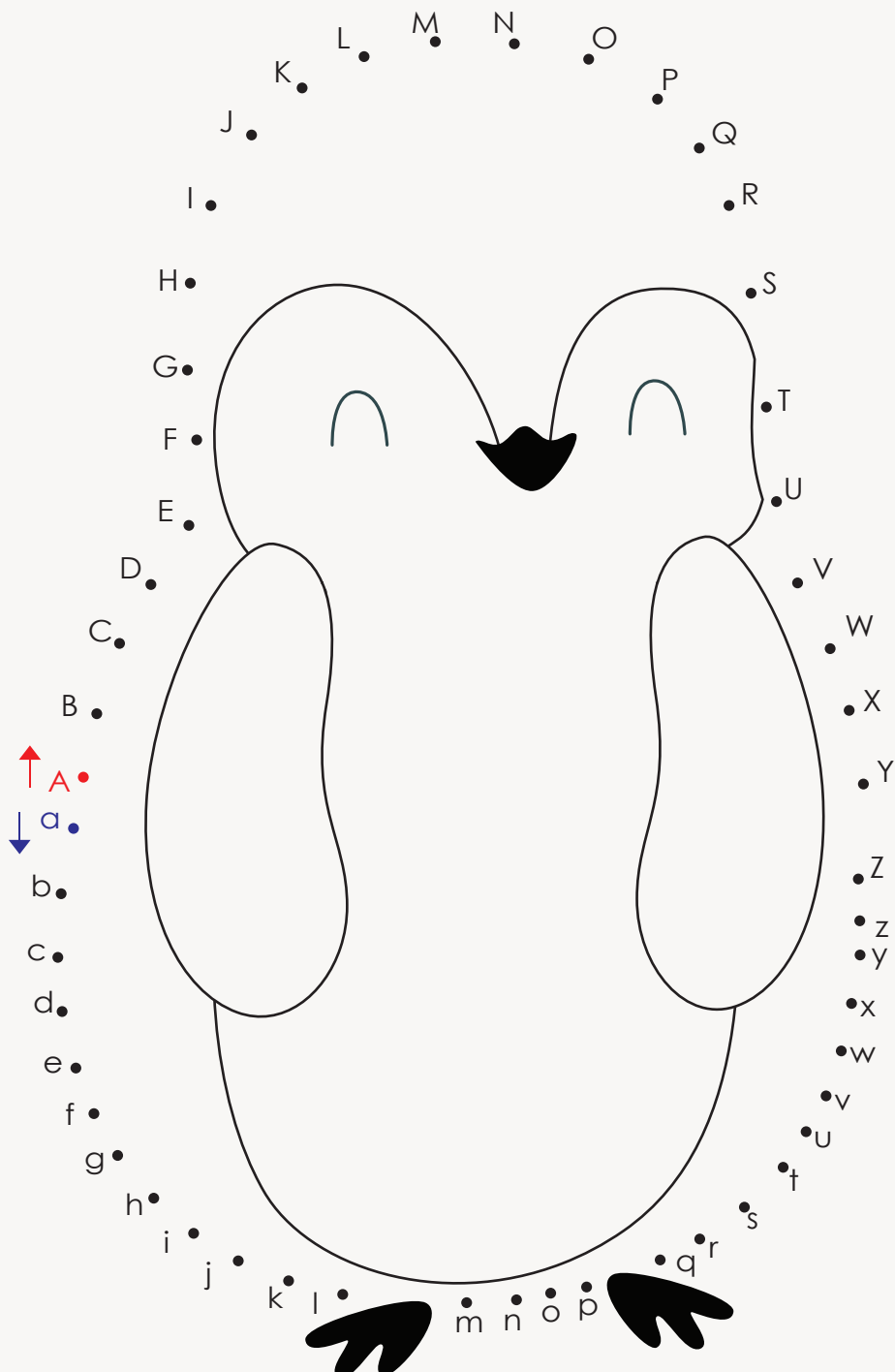


Circle the matching letters :

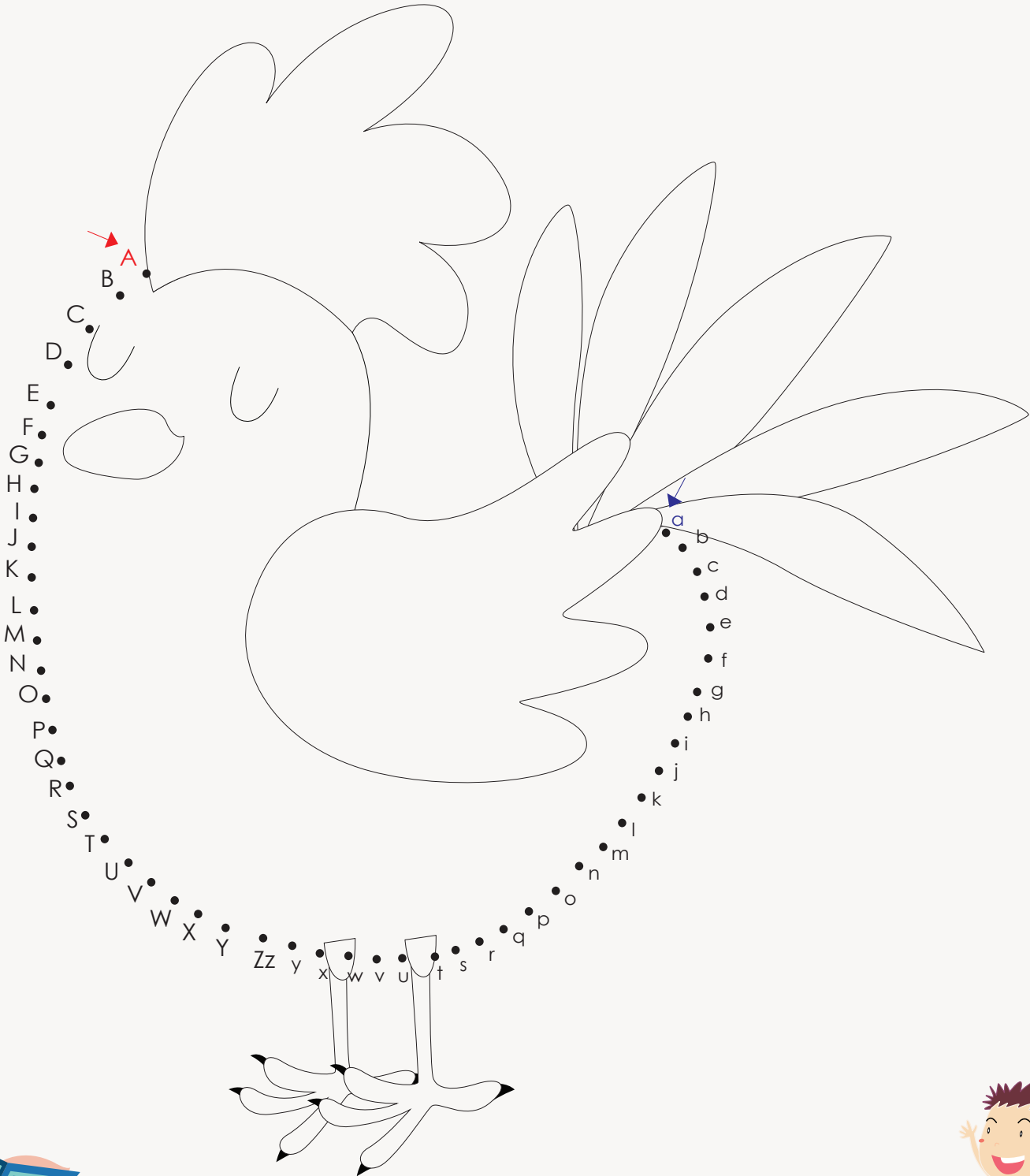
a	a	b	a	a	o	s	v
b	e	n	a	b	g	b	b
c	c	e	c	z	c	e	o
f	f	f	i	l	f	e	h
g	b	g	d	g	e	g	d
h	n	h	f	h	n	h	h
k	k	k	g	k	h	l	k
i	u	i	k	i	i	j	l
m	p	m	w	m	q	n	m
p	p	a	p	q	p	o	p
q	q	p	c	h	q	s	q
u	v	u	w	n	u	u	p
v	v	w	a	a	v	u	v
z	u	z	u	z	z	t	e



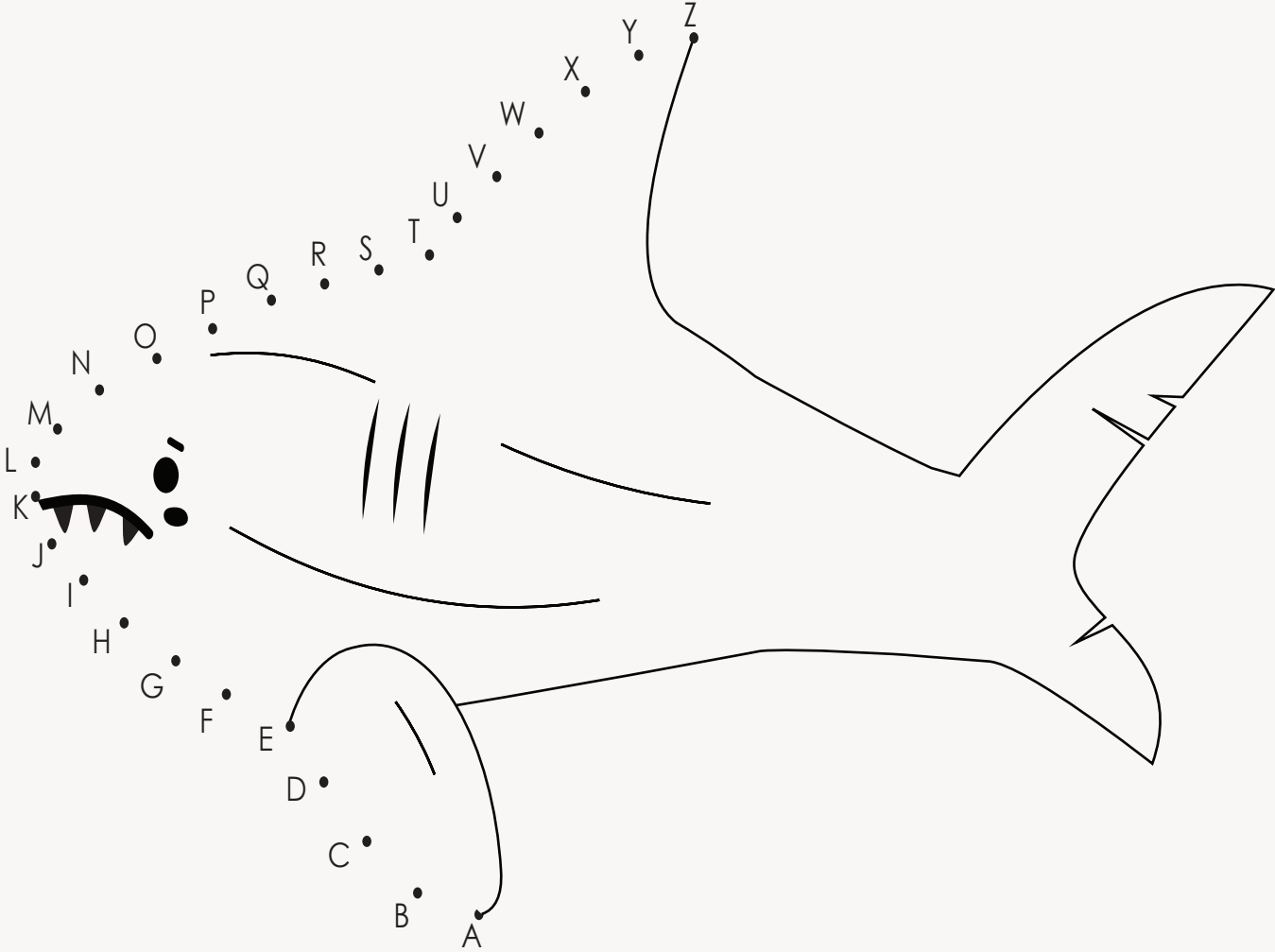
Connect the dots (A to Z) and (a to z) :



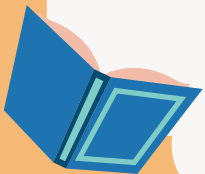
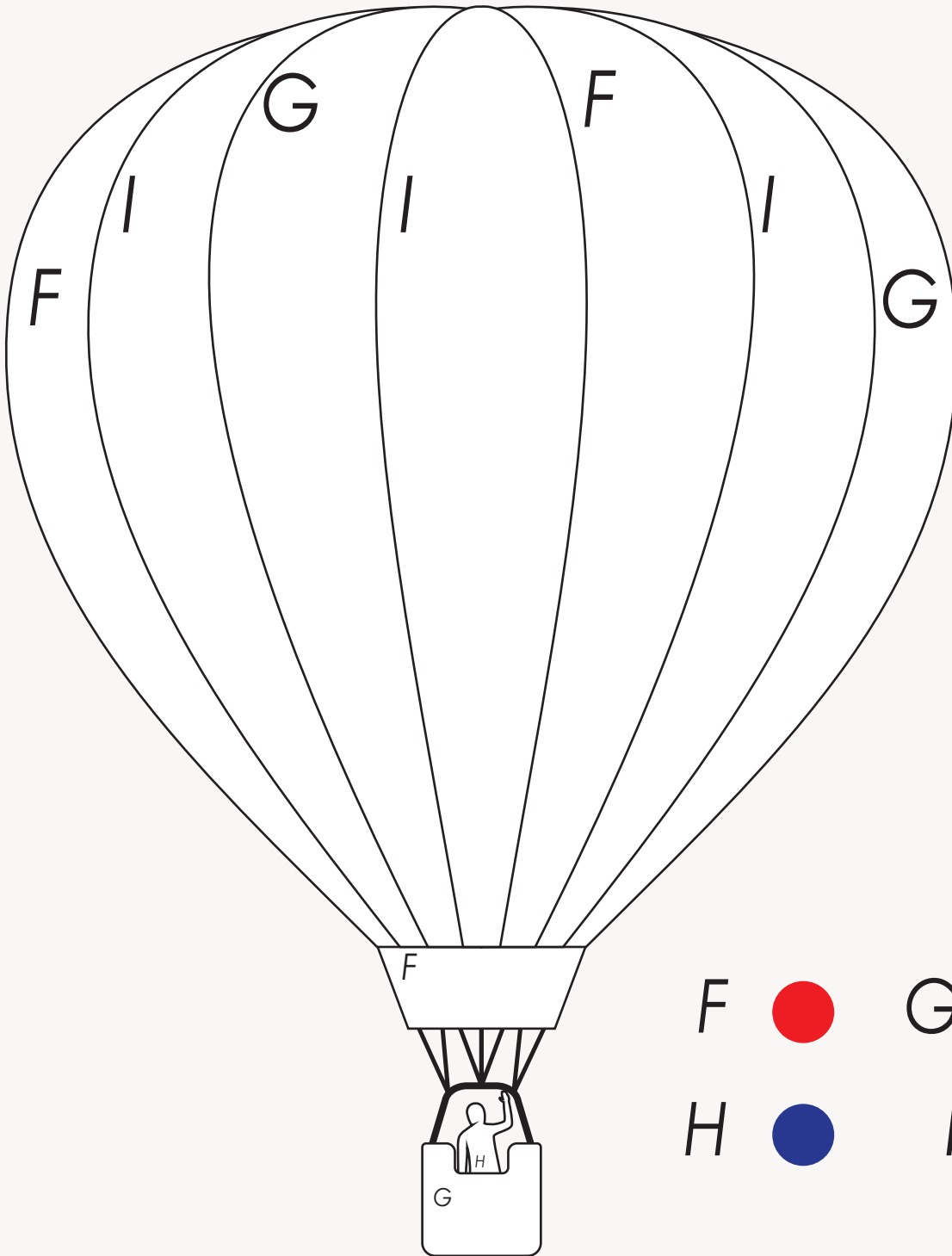
Connect the dots (A to Z) and (a to z) :



Connect the dots (A to Z) :



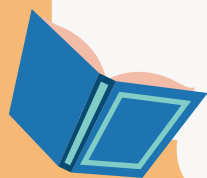
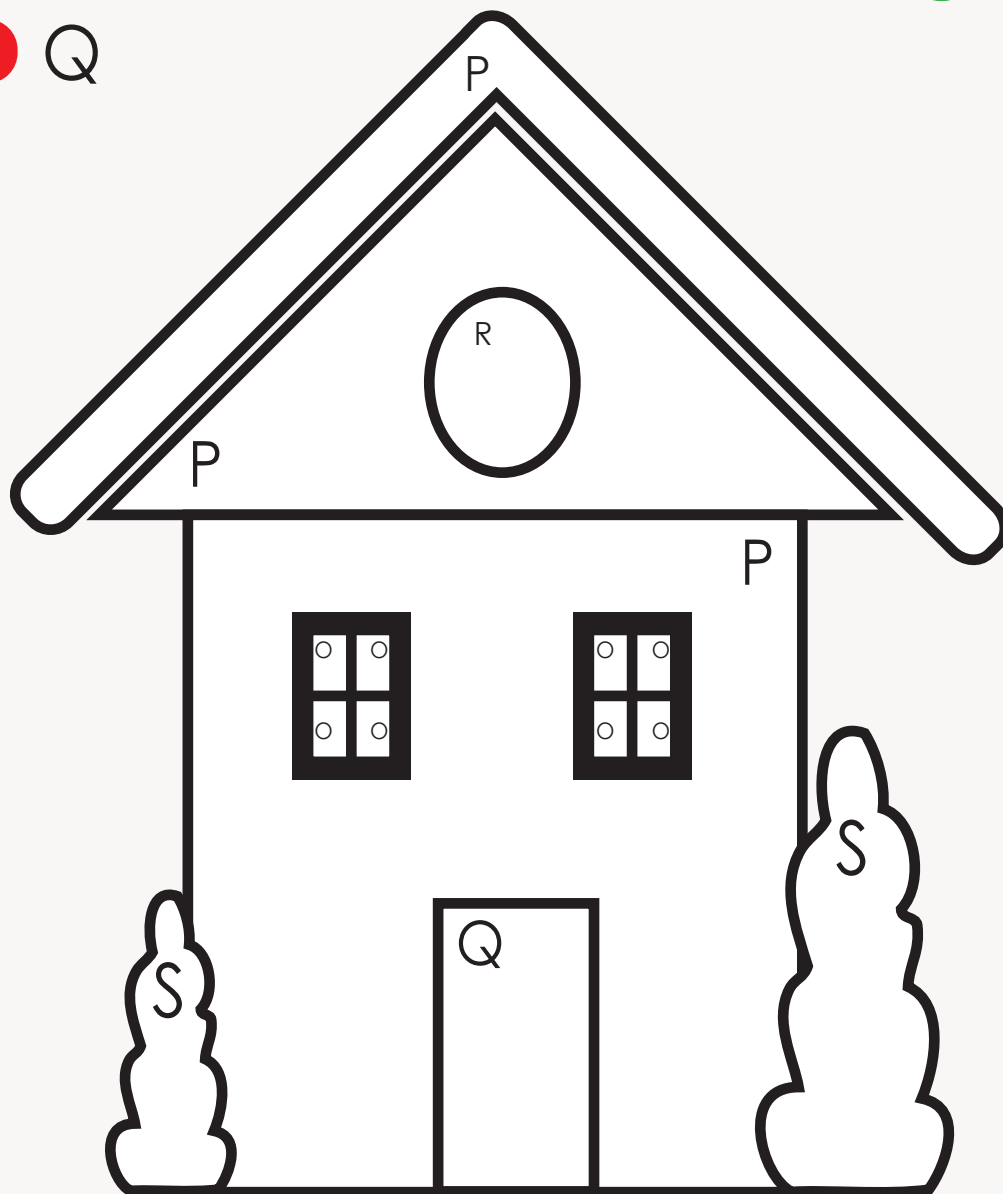
Color the balloon :



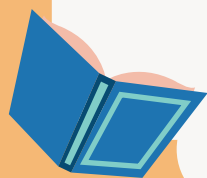
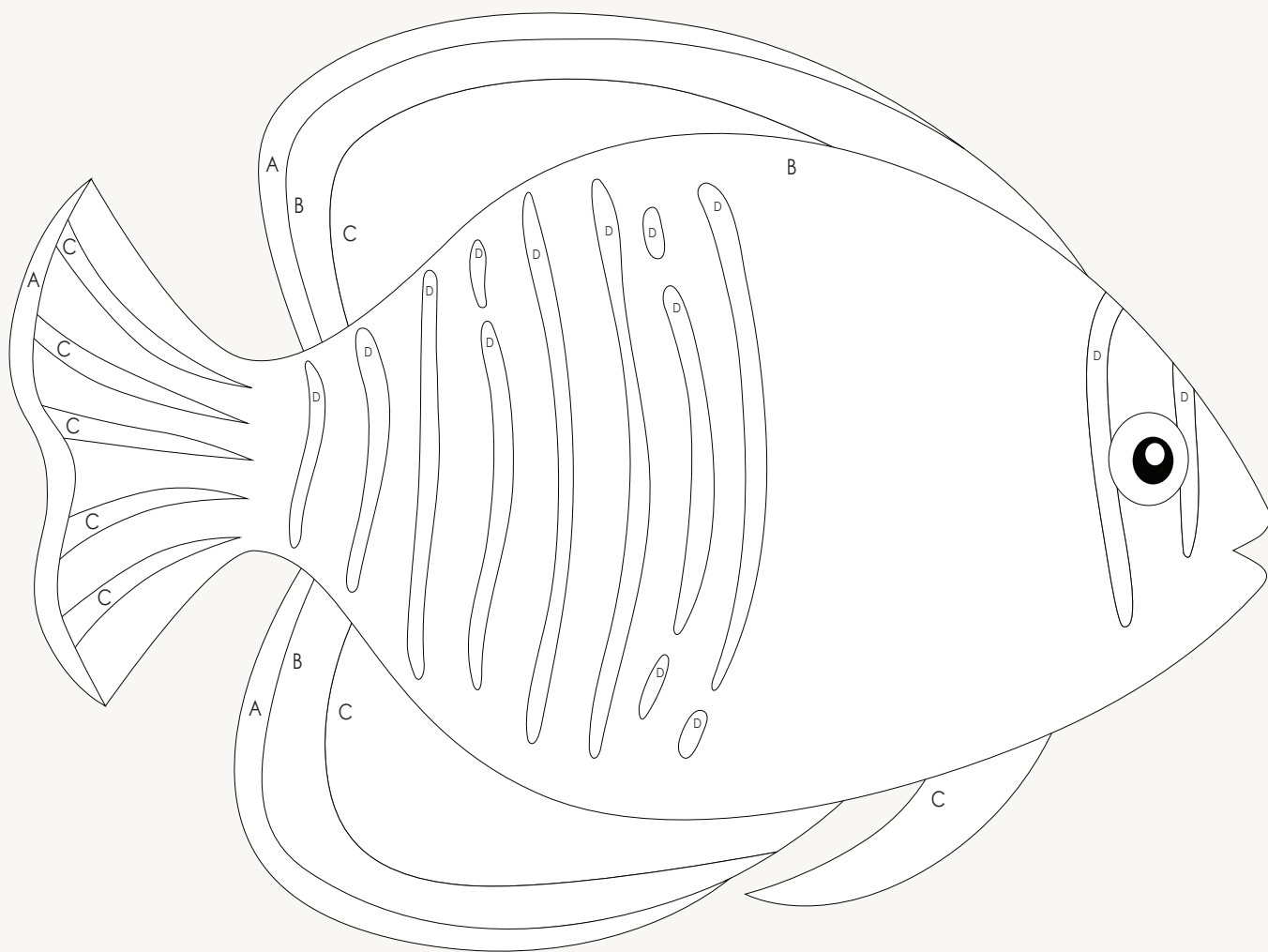
Color the house using the alphabet code :

- O
- P
- Q

- R
- S



Color the fish using the alphabet code :





A B C D E
F G H I J K L
M N O P Q R S T U V
W X Y Z



